

THE ROAD COMMISSION FOR IONIA COUNTY



170 E. RIVERSIDE DRIVE
IONIA, MI 48846

www.ioniacountyroads.org

2017
SUPPLEMENTAL
ANNUAL REPORT

ROAD COMMISSION FOR IONIA COUNTY

170 EAST RIVERSIDE DRIVE

IONIA, MICHIGAN

2017

SUPPLEMENTAL ANNUAL REPORT

KAREN D. BOTA, CHAIRPERSON

CHARLES G. MINKLEY, VICE-CHAIR

ROBERT G. DUNTON, MEMBER

KENNETH L. GASPER, MEMBER

ALBERT A. ALMY, MEMBER

DOROTHY G. POHL, MANAGING DIRECTOR

PAUL A. SPITZLEY, COUNTY HIGHWAY ENGINEER

ROAD COMMISSION FOR IONIA COUNTY

170 E. Riverside Drive • P.O. Box 76 • Ionia, Michigan 48846 • Phone (616) 527-1700 • Fax (616) 527-8848

CHARLES G. MINKLEY
Commissioner

KENNETH L. GASPER
Commissioner

ALBERT A. ALMY
Commissioner

KAREN D. BOTA
Commissioner

ROBERT G. DUNTON
Commissioner

DOROTHY G. POHL, CPA
Managing Director

PAUL A. SPITZLEY, P.E.
County Highway Engineer

May 9, 2018

The Honorable Board of County Commissioners
County of Ionia, Michigan
County Courthouse
Ionia, Michigan 48846

Dear Commissioners:

We are pleased to present for your review our Supplemental Annual Report for 2017. The formal accounting report required by law was submitted to the Michigan Department of Transportation. We held a Township Meeting at the Road Commission in February and are now meeting with many of our townships throughout the year. This report will be distributed to each township official at their regular monthly meetings or mailed to the township clerk.

As in the past, we will continue to search for the most efficient and effective methods to accomplish our work and give the taxpayers the "best bang for their buck." We will continue to evaluate both services and service levels to optimize the expenditure of new transportation funding. We will work very hard to pass a Countywide Road Millage this year in order to "fix the worst roads".

We sincerely appreciate the help and support that the County Board and all the Township Boards in Ionia County have given us over the past year. We look forward to our continued good working relationship to provide the highest possible level of safety and service on Ionia County roads and bridges.

Respectfully submitted on behalf of the Board of County Road Commissioners for Ionia County,

Dorothy G. Pohl

Dorothy G. Pohl
Managing Director/Clerk of the Board
Ionia County Road Commission

TABLE OF CONTENTS
Road Commission for Ionia County
2017 Annual Report

Introduction	1 - 2
2017 Revenue and Expenditure Charts	3
History of Major Revenues	4
2017 Financial Summary with Comparative Data	5
2017 Primary Routine Maintenance Expenditures by Township	6
2017 Local Routine Maintenance Expenditures by Township.....	7
2017 Primary and Local Maintenance by Type.....	8
Primary and Local Projects by Township	9 - 12
Schedule of Capital Outlay.....	13
Status of Road Mileage by Township.....	14
2017 Right of Way Permits Issued	15
Organization Chart	16

INTRODUCTION

Road Commission for Ionia County 2017 Annual Report

“With pride, the Road Commission for Ionia County strives to provide the highest quality roads and bridges to public and commercial users in the most effective manner possible.”

This statement encompasses the mission of the Road Commission. This Annual Report documents our 2017 projects and financial activities and is designed to show how we strive to meet our goals.

The Road Commission for Ionia County was established in 1919 by a vote of the citizens of Ionia County and charged by law with the duty “to keep in reasonable repair, so that they shall be reasonably safe and convenient for public travel, all county roads, bridges and culverts that are under their care and control, and which are open to public travel”. State laws also require the Road Commission to permit and regulate certain activities in the road right of way, to enforce state restrictions on vehicle size and weight, and to set reasonable standards for adopting new roads into the county system.

Over the past 98 years, the Ionia County road system has grown to include 389 miles that are now designated as County Primary roads. Passage of the McNitt Act in 1931 abolished the old township road system and transferred all miles of township roads to the Road Commission during the 1930’s. These old township roads, together with new roads built since then make up what is now the 684-mile system of County Local roads. Overall, 35% or 378 miles of all Ionia County roads are paved, with the remaining 696 miles being either gravel surfaced or unimproved.

The Michigan Transportation Fund (MTF) is the depository of fuel taxes and vehicle registration fees collected by the state and is the principal source of road commission funding. The collected funds are distributed by a complicated, yet transparent and verifiable formula to the Michigan Department of Transportation (MDOT), 535 cities and villages, and the 83 county road agencies. Our total MTF revenues for 2017 were up significantly, due to the 2015 transportation funding package.

The Road Commission works very hard to take advantage of any available special funds, such as Michigan Economic Development Funds (Category A, D & F) and Federal STP funds to accomplish more projects. We were able to tackle a major rehabilitation project on 2.5 miles of Morrison Lake Road from Grand River to Saranac, utilizing both our employees and contractors. This project would not have been possible without a portion of the increase we received from the MTF in 2017. We were also able to rehabilitate drainage and upgrade Riverside Drive from M66 to Kelsey and do major resurfacing in the Portland small urban area with specialized grant funding.

Over the past 23 years, over \$21 million dollars have been invested to replace county bridges. This work was possible through funding provided by the Federal Highway Administration, State of Michigan Local Bridge Program, and our townships. While we did not replace any major bridges in 2017, additional MTF funding made it possible to replace and repair a large culvert that failed on Musgrove Highway in a timely manner.

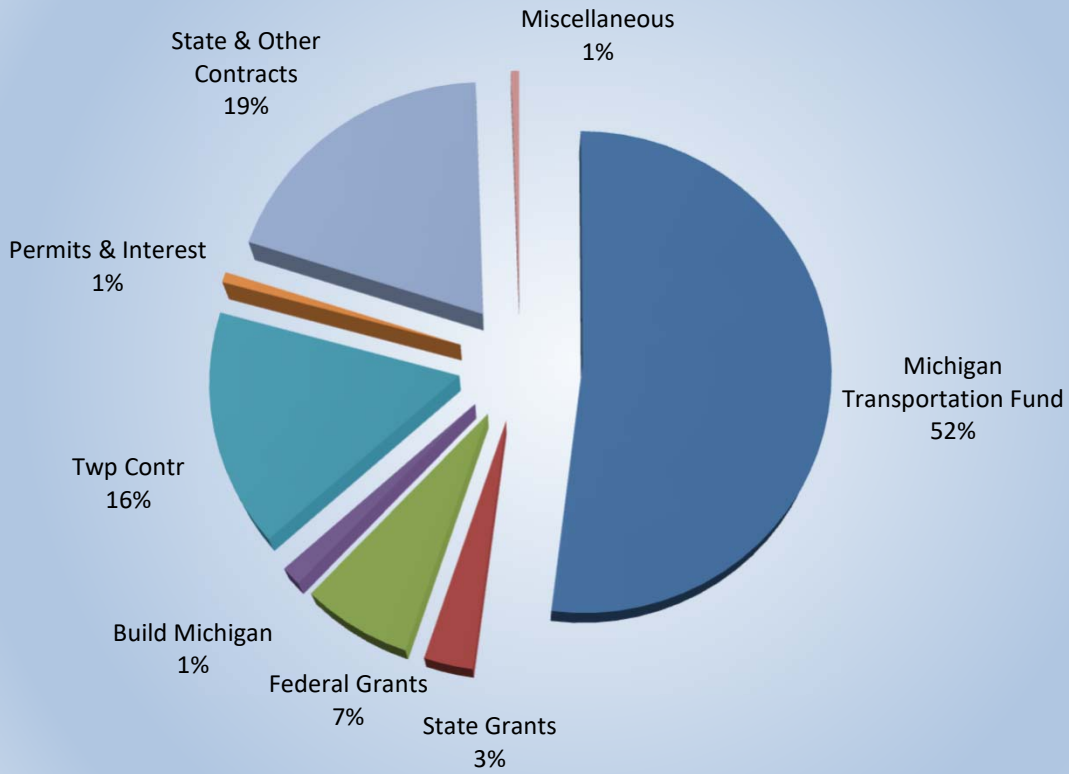
Although we did not have a formal Local Road Matching Program in 2017, we continued to cover most internal charges for work performed by road commission forces on township selected projects. The total cost of that limited program was \$243,982, or an average of \$15,249 per township. Financial assistance from our townships contributed over \$2 million dollars for improvements and additional maintenance on the local road system. Without this township assistance, most local roads would see very little improvement. This partnership helps provide better service to our joint constituencies and promote a higher quality of life.

We received additional MTF funding as a result of the 2015 transportation funding package beginning in April of 2017. The additional funding allowed us to do an additional preventive maintenance and resurfacing on the county paved primary road system. A large portion has been reserved for preventive maintenance so that we can keep good and fair roads from becoming poor roads. The condition of our road system is continuing to decline and this new funding will not allow us to catch up and get ahead of the curve.

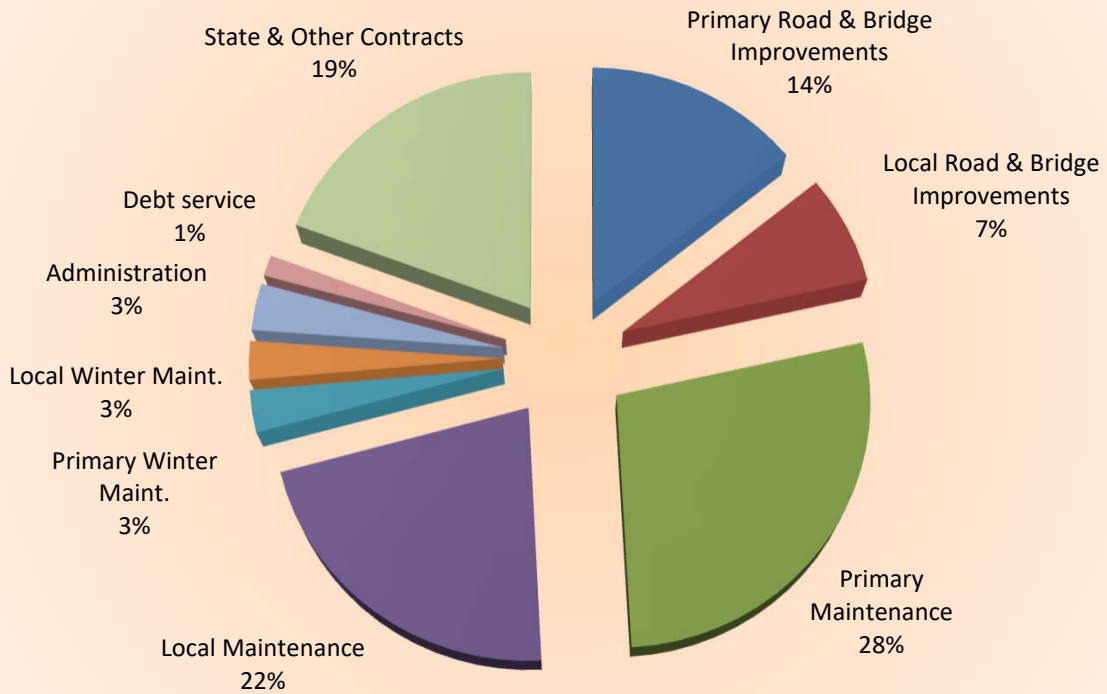
We have determined that the only way we can “fix the worst roads first” and not have the fair and good roads fail, will be additional funding through a countywide road millage. We will be requesting 1 mill for 6 years in August 2018 in order to address the worst roads and try to stop the continued deterioration. Our goal is to identify the most cost efficient improvements, aiding the most travelers over the most miles of road possible. It is imperative that we keep our good roads “good”. We firmly believe that this Asset Management approach is the only hope we have to turn our system around and it is going to take a lot of time to get that done without the millage.

Our Road Commission employees are a vital element of our equation. We appreciate their hard work and dedication. We were happy to be able to add an additional driver this year due to increased responsibilities and budgeted funds from MDOT. Our employees continue to work very hard to provide a reasonable service level to you and other county residents. As this report shows, the Road Commission for Ionia County and its employees, your local road professionals, are faithfully working to fulfill the commission’s mandate to provide safe and convenient roads.

ICRC 2017 REVENUES



ICRC 2017 EXPENDITURES



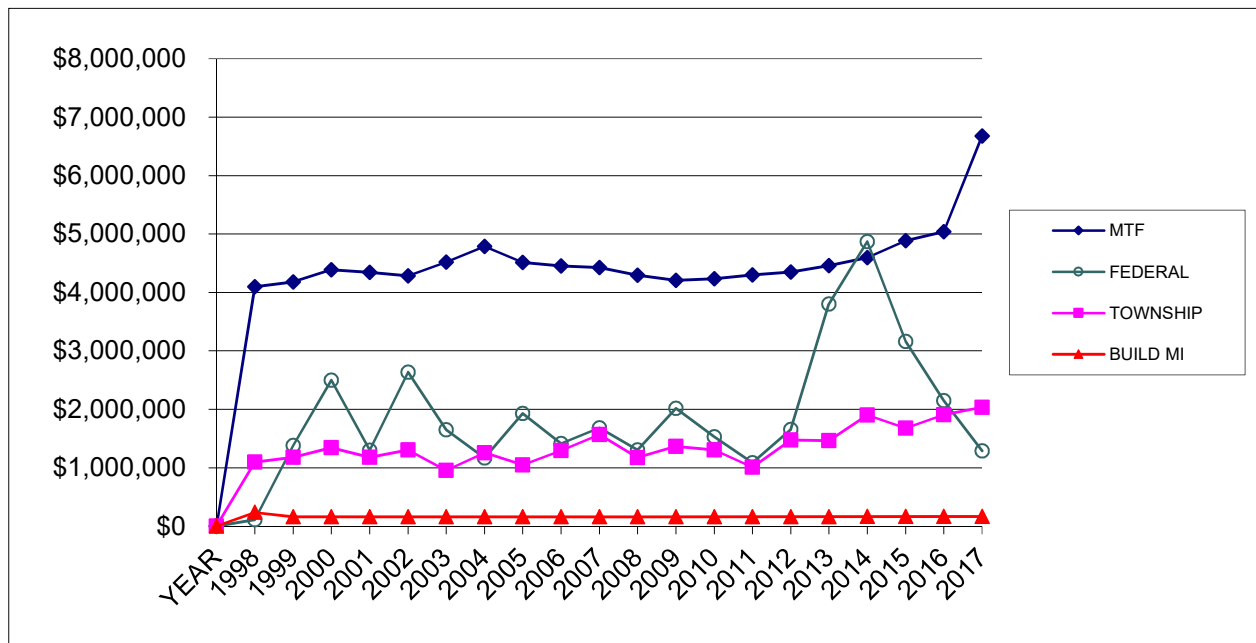
IONIA COUNTY ROAD COMMISSION

History of MTF Revenue

Township Contributions and Federal/State Aid

YEAR	MTF COUNTY SHARE	BUILD MI MTF	FEDERAL STATE	TOWNSHIP CONTRIBUTIONS	TWP CONTR AS % OF MTF
1998	\$ 4,098,990	\$ 234,473	\$ 108,494	\$ 1,094,049	27%
1999	\$ 4,177,338	\$ 160,238	\$ 1,382,346	\$ 1,175,931	28%
2000	\$ 4,388,604	\$ 159,875	\$ 2,495,881	\$ 1,344,917	31%
2001	\$ 4,345,328	\$ 159,261	\$ 1,298,266	\$ 1,177,470	27%
2002	\$ 4,286,062	\$ 158,213	\$ 2,636,751	\$ 1,305,601	30%
2003	\$ 4,518,602	\$ 159,082	\$ 1,649,975	\$ 955,860	21%
2004	\$ 4,786,647	\$ 161,212	\$ 1,167,282	\$ 1,253,636	26%
2005	\$ 4,515,197	\$ 159,113	\$ 1,929,262	\$ 1,046,112	23%
2006	\$ 4,453,393	\$ 157,915	\$ 1,413,450	\$ 1,295,117	29%
2007	\$ 4,427,614	\$ 157,846	\$ 1,684,459	\$ 1,564,583	35%
2008	\$ 4,296,173	\$ 159,041	\$ 1,306,380	\$ 1,174,721	27%
2009	\$ 4,209,680	\$ 160,364	\$ 2,016,716	\$ 1,363,984	32%
2010	\$ 4,235,886	\$ 161,075	\$ 1,530,104	\$ 1,304,006	31%
2011	\$ 4,301,927	\$ 161,420	\$ 1,085,778	\$ 1,010,200	23%
2012	\$ 4,349,562	\$ 161,552	\$ 1,656,083	\$ 1,475,562	34%
2013	\$ 4,460,278	\$ 161,971	\$ 3,801,355	\$ 1,464,523	33%
2014	\$ 4,597,456	\$ 163,510	\$ 4,871,257	\$ 1,900,752	41%
2015	\$ 4,887,240	\$ 165,373	\$ 3,161,690	\$ 1,677,466	34%
2016	\$ 5,042,418	\$ 165,978	\$ 2,149,523	\$ 1,904,905	38%
2017	\$ 6,675,295	\$ 166,441	\$ 1,287,995	\$ 2,033,145	30%

ICRC - REVENUE BREAKDOWN



IONIA COUNTY ROAD COMMISSION
2017 FINANCIAL SUMMARY
WITH COMPARISON DATA

	2013	2014	2015	2016	2017	PRELIMINARY 2018
REVENUES	ACTUAL	ACTUAL	ACTUAL	ACTUAL	ACTUAL	BUDGET
Beginning Fund Balance	\$1,850,587	\$1,679,103	\$1,967,089	\$2,761,647	\$2,286,063	\$1,729,941
Permit Revenues	\$55,080	\$67,691	\$81,046	\$75,613	\$86,649	\$84,320
Federal Funds	\$1,090,447	\$3,261,834	\$1,752,455	\$942,899	\$891,812	\$2,562,108
Michigan Transportation Funds	\$4,622,249	\$4,760,966	\$5,052,613	\$5,208,396	\$6,841,736	\$7,043,285
State Critical Bridge Funds	\$2,368,827	\$515,411	\$617,871	\$1,206,624	\$21,183	
State Economic Development Funds	\$342,081	\$1,094,012	\$791,364	\$397,876	\$375,000	\$875,896
County Board Appropriation	\$35,000	\$0	\$0	\$0	\$0	
City, Private, Other Contributions	\$168,672	\$188,632	\$99,636	\$42,546	\$178,406	\$615,775
Township Contributions	\$1,464,523	\$1,900,752	\$1,677,466	\$1,904,905	\$2,033,145	\$2,020,620
State Trunkline Contract	\$1,384,449	\$1,804,067	\$1,485,747	\$3,287,739	\$2,324,451	\$1,860,547
Interest Income	\$2,866	\$1,422	\$870	\$1,169	\$2,684	\$1,000
Equipment Rental Credits	\$1,866,885	\$2,218,884	\$2,169,385	\$2,329,686	\$2,277,426	\$1,850,000
Lease Proceeds	\$135,000	\$226,000	\$220,000	\$202,480	\$0	\$0
Transfer in/Adjustments	\$0	\$0	\$0	\$0	\$0	\$0
Miscellaneous Income	\$7,088	\$104,985	\$178,986	\$87,212	\$70,342	\$30,000
TOTAL REVENUES	\$15,393,754	\$17,823,759	\$16,094,528	\$18,448,792	\$17,388,897	\$18,673,492
EXPENDITURES						
Primary Heavy Maintenance-Road	\$2,350,759	\$932,818	\$1,029,229	\$1,481,799	\$1,786,385	\$2,222,331
Primary Heavy Maintenance-Bridge	\$2,702,305	\$2,808,674	\$966,426	\$1,375,726	\$47,973	\$2,194,000
Primary Routine Maintenance	\$1,172,228	\$961,467	\$1,304,701	\$1,275,191	\$1,346,339	\$1,264,987
Primary Preventive Maintenance	\$85,222	\$1,795,111	\$1,029,969	\$1,654,554	\$2,198,261	\$1,441,596
Primary Winter Maintenance	\$451,603	\$481,883	\$376,830	\$483,260	\$357,147	\$431,744
Local Heavy Maintenance-Road	\$674,772	\$1,009,289	\$1,185,797	\$1,118,633	\$931,967	\$1,004,975
Local Heavy Maintenance-Bridge	\$24,444	\$0	\$0	\$0	\$0	\$0
Local Routine Maintenance	\$1,703,713	\$1,506,801	\$1,829,568	\$1,763,170	\$1,862,618	\$1,834,407
Local Preventive Maintenance	\$618,352	\$906,676	\$628,596	\$583,615	\$917,761	\$935,349
Local Winter Maintenance	\$398,189	\$804,377	\$421,532	\$417,716	\$327,916	\$464,942
State Trunkline Maintenance	\$1,267,387	\$1,728,585	\$1,485,830	\$3,137,205	\$2,359,404	\$1,860,547
Equipment Expense	\$1,481,650	\$2,042,878	\$1,615,850	\$1,614,672	\$1,584,028	\$1,639,781
Equipment Depreciation	\$374,026	\$288,747	\$404,178	\$522,285	\$627,232	\$450,000
Administrative Expense	\$305,993	\$303,982	\$358,675	\$236,408	\$395,495	\$533,432
Engineering Expense	\$64,070	\$43,840	\$30,923	\$6,417	\$2,110	\$37,538
Maintenance-Other Units	\$40,416	\$86,816	\$125,058	\$42,396	\$126,654	\$31,633
Capital Outlay	\$324,589	\$396,730	\$825,958	\$862,562	\$703,762	\$848,700
Debt Service	\$48,958	\$142,672	\$117,939	\$125,170	\$177,308	\$175,310
Ending Fund Balance	\$1,679,104	\$1,967,061	\$2,761,647	\$2,270,298	\$2,263,769	\$1,752,220
EXPENDITURES	\$15,767,780	\$18,208,407	\$16,498,706	\$18,971,077	\$18,016,129	\$19,123,492
LESS: EQUIPMENT DEPRECIATION	(\$374,026)	(\$384,648)	(\$404,178)	(\$522,285)	(\$627,232)	(\$450,000)
TOTAL EXPENDITURES	\$15,393,754	\$17,823,759	\$16,094,528	\$18,448,792	\$17,388,897	\$18,673,492

IONIA COUNTY ROAD COMMISSION
2017 PRIMARY ROAD AND BRIDGE ROUTINE/WINTER MAINTENANCE
Summary by Township

TOWNSHIP	COST	MILES	PER MILE
BERLIN	\$134,443	29.39	\$4,574.45
BOSTON	\$156,134	30.33	\$5,147.84
CAMPBELL	\$55,493	19.08	\$2,908.44
DANBY	\$104,943	23.46	\$4,473.27
EASTON	\$125,545	26.43	\$4,750.09
IONIA	\$98,638	23.33	\$4,227.95
KEENE	\$112,291	28.39	\$3,955.30
LYONS	\$70,970	18.70	\$3,795.19
NORTH PLAINS	\$140,381	26.49	\$5,299.40
ODESSA	\$53,419	19.82	\$2,695.21
ORANGE	\$132,696	31.33	\$4,235.43
ORLEANS	\$127,937	20.19	\$6,336.65
OTISCO	\$96,236	20.76	\$4,635.65
PORTLAND	\$85,280	19.51	\$4,371.09
RONALD	\$116,725	31.36	\$3,722.10
SEBEWA	\$92,358	21.13	\$4,370.94

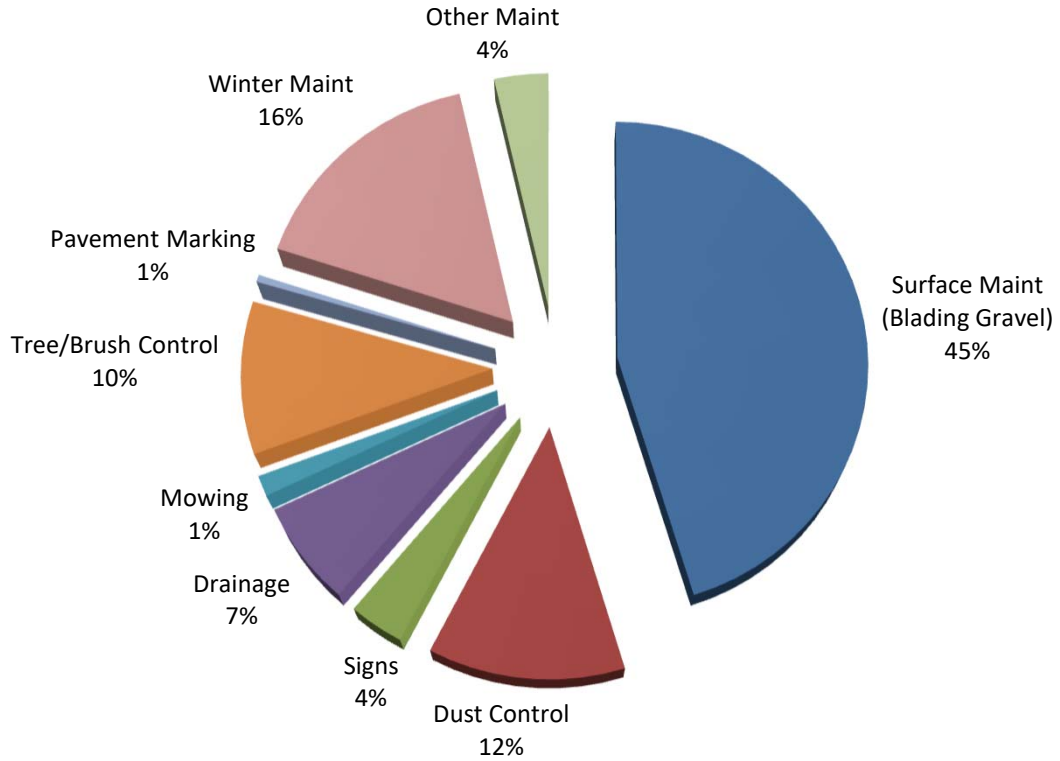
TOTAL 2017
 PRIMARY ROUTINE/WINTER
 MAINTENANCE \$1,703,489 389.70 \$4,371.28

IONIA COUNTY ROAD COMMISSION
2017 LOCAL ROAD AND BRIDGE ROUTINE/WINTER MAINTENANCE
Summary by Township

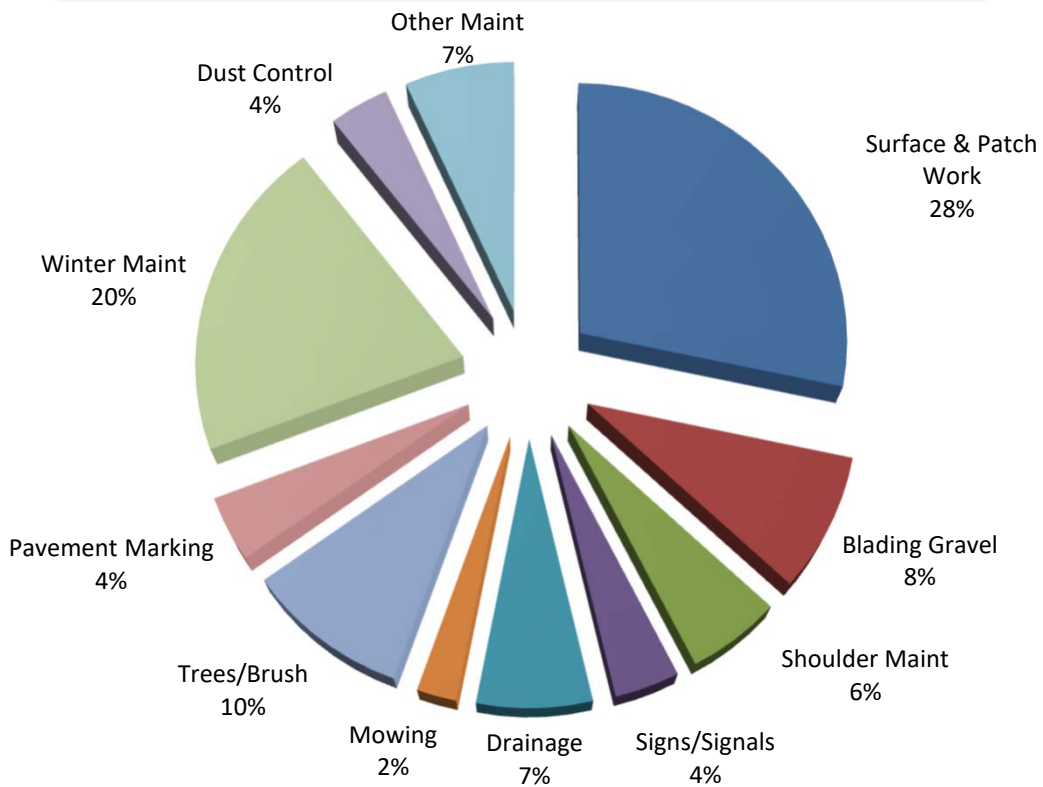
TOWNSHIP	ICRC COST	MILES	AVERAGE PER MILE
BERLIN	\$114,262	42.96	\$2,659.73
BOSTON	\$160,454	36.42	\$4,405.66
CAMPBELL	\$138,065	43.56	\$3,169.54
DANBY	\$206,965	46.19	\$4,480.73
EASTON	\$87,128	35.79	\$2,434.42
IONIA	\$134,784	42.30	\$3,186.38
KEENE	\$155,653	40.28	\$3,864.28
LYONS	\$128,881	45.19	\$2,851.98
NORTH PLAINS	\$130,088	42.47	\$3,063.06
ODESSA	\$177,700	55.52	\$3,200.65
ORANGE	\$68,664	25.95	\$2,646.01
ORLEANS	\$164,600	47.47	\$3,467.45
OTISCO	\$140,380	46.81	\$2,998.93
PORTLAND	\$144,078	42.94	\$3,355.33
RONALD	\$114,989	36.24	\$3,172.99
SEBEWA	\$123,842	51.41	\$2,408.91

TOTAL 2017
 LOCAL ROUTINE/WINTER
 MAINTENANCE \$2,190,533 681.50 \$3,214.28

2017 LOCAL ROAD MAINTENANCE BY TYPE



2017 PRIMARY ROAD MAINTENANCE BY TYPE



IONIA COUNTY ROAD COMMISSION
2017 Primary Road and Bridge Projects
Listed by Township

TOWNSHIP	DESCRIPTION	2017 TOTAL COST	FEDERAL/ STATE FUNDS	TOWNSHIP FUNDS
BOSTON	Asphalt Resurface-Morrison Lake Rd	\$ 527,609		
	Gravel Resurfacing-Portland Rd	\$ 155,624		
EASTON	Crack/Chip/Fog Seal - Johnson, Haynor W Main and Lincoln Ave	\$ 356,241		\$ 356,241
IONIA	Reconstruction-Riverside Drive	\$ 564,114	\$ 375,000	
	Crack/Chip/Fog Seal - North, Cyrus	\$ 56,455		\$ 56,455
KEENE	Asphalt Surfacing-Marble/Sayles	\$ 51,821		\$ 31,821
ORANGE	Bridge Replacement-David Hwy	\$ 22,298	\$ 21,183	\$ -
	Keefer Safety	\$ 22,849	\$ 18,279	
PORTLAND	Asphalt Resurface-Portland Small Urban Area - Gr River, Keefer, LookingGlass	\$ 459,531	\$ 363,584	\$ -
SEBEWA	Large Culvert Repl - Musgrove Hwy	\$ 56,659		
MISC	Engineering-future projects	\$ 25,675		\$ 12,837
	Countywide Chip & Fog Seal Prev Maint Charlotte, David, Divine, Fisk, Gr River Hawley, Hubbardston, Johnson, Keefer, Kelsey, Lincoln, Long Lk, North, Portland Sunfield, W Main, Whites Bridge	\$ 1,668,240	\$ 509,949	
	Total	\$ 3,967,116	\$ 1,287,995	\$ 457,354



Morrison Lake Road



Musgrove Hwy culvert

IONIA COUNTY ROAD COMMISSION

2017 Local Road and Bridge Projects

Listed by Township

TOWNSHIP	DESCRIPTION	PROJECT COST	TOWNSHIP CONTRIBUTION
BERLIN	Drainage and Culvert Replacements	\$ 2,630	\$ 875
	Dust Control Applications	\$ 18,218	\$ 18,218
	Crack/Chip/Fog Seal - Bennet, Peck Lake	107533	107533
	Limestone Resurface-Bliss Rd	\$ 9,807	\$ 1,472
	Total	\$ 138,188	\$ 128,098
BOSTON	Drainage and Culvert Replacements	\$ 12,619	\$ 960
	6500 cyds Gravel Resurfacing	\$ 71,682	\$ 67,044
	Dust Control Applications	\$ 30,922	\$ 30,922
	Total	\$ 115,223	\$ 98,926
CAMPBELL	Drainage and Culvert Replacements	\$ 25,041	\$ 3,603
	Dust Control Applications	\$ 23,917	\$ 23,917
	Total	\$ 48,958	\$ 27,520
DANBY	Drainage and Culvert Replacements	\$ 11,720	\$ 634
	Dust Control Applications	\$ 33,752	\$ 33,752
	7000 cyds Gravel Resurfacing	\$ 97,835	\$ 87,973
	Limestone Surfacing-Peake Rd	\$ 93,680	\$ 83,810
	Brush cut - Okemos Rd	\$ 4,017	\$ 2,039
	Brush cut - Peake Rd	\$ 12,979	\$ 6,446
	Total	\$ 253,983	\$ 214,654
EASTON	Drainage and Culvert Replacements	\$ 7,748	\$ 190
	Dust Control Applications	\$ 23,891	\$ 23,891
	5000 cyds Gravel Resurfacing	\$ 50,122	\$ 46,787
	Haynor/Rector Class A Upgrade	\$ 29,956	-
	Crack/Chip/Fog Seal - Wall St	\$ 31,301	\$ 31,301
	Total	\$ 143,018	\$ 102,169

IONIA COUNTY ROAD COMMISSION
2017 Local Road and Bridge Projects
Listed by Township

TOWNSHIP	DESCRIPTION	PROJECT COST	TOWNSHIP CONTRIBUTION
IONIA	Drainage and Culvert Replacements	\$ 9,220	\$ 1,043
	Dust Control Applications	\$ 20,714	\$ 20,714
	5500 cyds Gravel Resurfacing	\$ 60,092	\$ 54,501
	Crack/Chip/Fog Seal - Morse, Hill, New North Dexter, Horizon sub	\$ 80,018	\$ 80,018
	Total	\$ 170,044	\$ 156,276
KEENE	Drainage and Culvert Replacements	\$ 19,249	\$ 1,709
	Dust Control Applications	\$ 22,586	\$ 22,586
	Limestone Surfacing-Lee Rd	\$ 46,261	\$ 42,594
	2000 cyds Gravel Resurfacing	\$ 23,720	\$ 20,279
	Total	\$ 111,816	\$ 87,168
LYONS	Drainage and Culvert Replacements	\$ 18,269	\$ 1,505
	Dust Control Applications	\$ 29,922	\$ 29,922
	Crack/Chip/Fog Seal- Staley Rd	\$ 3,445	\$ 3,445
	4000 cyds Gravel Resurfacing	\$ 32,558	\$ 29,897
	Total	\$ 84,194	\$ 64,769
NORTH PLAINS	Drainage and Culvert Replacements	\$ 8,777	\$ 458
	Crack/Chip Fog Seal - O'Brien Road	\$ 31,640	\$ 31,640
	Dust Control Applications	\$ 15,266	\$ 15,266
	5500 cyds Gravel Resurfacing	\$ 45,037	\$ 40,728
	Total	\$ 100,720	\$ 88,092
ODESSA	Drainage and Culvert Replacements	\$ 11,258	\$ 735
	Dust Control Applications	\$ 23,694	\$ 23,694
	2250 cyds Gravel Resurfacing	\$ 24,873	\$ 23,058
	Tupper Lk bridge deck resurfacing	\$ 9,043	\$ 4,512
	Total	\$ 68,868	\$51,999

IONIA COUNTY ROAD COMMISSION

2017 Local Road and Bridge Projects

Listed by Township

TOWNSHIP	DESCRIPTION	PROJECT COST	TOWNSHIP CONTRIBUTION
ORANGE	Drainage and Culvert Replacements	\$ 3,095	\$ 1,469
	Dust Control Applications	\$ 7,754	\$ 7,754
	2500 cyds Gravel Resurfacing	\$ 24,356	\$ 24,356
	Total	\$ 35,205	\$ 33,579
ORLEANS	Drainage and Culvert Replacements	\$ 5,577	\$ 178
	Dust Control Applications	\$ 25,679	\$ 25,679
	4000 cyds Gravel Resurfacing	\$ 41,208	\$ 38,819
	Total	\$ 72,464	\$ 64,676
OTISCO	Drainage and Culvert Replacements	\$ 4,006	\$ 176
	Dust Control Applications	\$ 34,582	\$ 34,582
	7250 cyds Gravel Resurfacing	\$ 80,269	\$ 74,243
	Crack Seal - Palmer Road	\$ 3,895	\$ 3,895
Total	\$ 122,752	\$ 112,896	
PORTLAND	Drainage and Culvert Replacements	\$ 3,814	\$ 368
	Dust Control Applications	\$ 33,892	\$ 33,892
	10,000 cyds Gravel Resurfacing	\$ 93,282	\$ 84,042
	Crack/Chip/Fog - Ionia, Chinook and Stillmeadow sub	\$ 64,475	\$ 64,475
Total	\$ 195,463	\$ 182,777	
RONALD	Dust Control Applications	\$ 29,537	\$ 29,537
	Drainage and Culvert Replacements	\$ 13,589	\$ 1,165
	2800 cyds Gravel Resurfacing	\$ 26,145	\$ 24,650
Total	\$ 69,271	\$ 55,352	
SEBEWA	Drainage and Culvert Replacements	\$ 4,457	\$ 1,194
	Dust Control Applications	\$ 33,912	\$ 33,912
	7,000 cyds Gravel Resurfacing	\$ 81,085	\$ 71,732
Total	\$ 119,454	\$ 106,838	

IONIA COUNTY ROAD COMMISSION
2017 CAPITAL OUTLAY
Equipment Purchases

Road Equipment:

4 Ton Patcher	\$33,207
Chainsaws/pole pruners	\$3,936
Sanders/Plows/Attachment	\$41,642
Bucket Truck	\$38,000
Tandem Axle Dump Trucks (2) - fully equipped	\$411,215
Grapple, Water Pump	\$2,629
2-Trailer Mounted Arrow Boards	\$7,360
Pickup Trucks	\$69,822
Radios	\$894



Office Equipment:

Computers	\$8,891
Printer/Copier	\$7,898

Shop/Building Equipment:

Generator final payment	\$74,020
Shop computer/diagnostic software	\$4,408

TOTAL 2017 CAPITAL OUTLAY EXPENSE

\$703,922



IONIA COUNTY ROAD COMMISSION

STATUS OF ROAD MILEAGE

July 1, 2017

Township	Primary Roads		Local Roads		Hard Surface Total	Gravel Surface Total	Total Miles in Twp.	% Hard Surface to Total
	Hard Surface	Gravel Surface	Hard Surface	Gravel Surface				
BERLIN	29.39	0.00	12.94	30.02	42.33	30.02	72.35	58.51%
BOSTON	25.50	4.83	2.28	33.99	27.78	38.82	66.60	41.71%
CAMPBELL	13.15	5.93	0.05	43.63	13.20	49.56	62.76	21.03%
DANBY	16.52	6.89	1.25	45.49	17.77	52.38	70.15	25.33%
EASTON	26.43	0.00	7.54	28.31	33.97	28.31	62.28	54.54%
IONIA	20.86	2.47	13.44	29.38	34.30	31.85	66.15	51.85%
KEENE	23.92	4.64	0.00	40.28	23.92	44.92	68.84	34.75%
LYONS	15.70	3.00	1.10	44.50	16.80	47.50	64.30	26.13%
NORTH PLAINS	18.69	7.80	1.97	40.50	20.66	48.30	68.96	29.96%
ODESSA	16.82	3.00	0.84	54.84	17.66	57.84	75.50	23.39%
ORANGE	23.26	8.07	0.33	25.49	23.59	33.56	57.15	41.28%
ORLEANS	16.50	3.59	1.55	46.03	18.05	49.62	67.67	26.67%
OTISCO	16.59	3.99	4.66	42.15	21.25	46.14	67.39	31.53%
PORTLAND	17.30	2.21	5.17	38.52	22.47	40.73	63.20	35.55%
RONALD	21.76	9.54	1.09	35.39	22.85	44.93	67.78	33.71%
SEBEWA	21.13	0.00	0.00	51.41	21.13	51.41	72.54	29.13%
TOTAL	323.52	65.96	54.21	629.93	377.73	695.89	1073.62	35.18%

IONIA COUNTY ROAD COMMISSION

RIGHT-OF-WAY PERMITS ISSUED

January 1, 2017 through December 31, 2017

Township	Residential / Farm Drive	Utility	Commercial Drive	Total Permits
Berlin	5	7	0	12
Boston	12	3	1	16
Campbell	7	2	1	10
Danby	3	3	0	6
Easton	5	9	0	14
Ionia	11	10	0	21
Keene	4	1	0	5
Lyons	9	2	0	11
North Plains	2	2	0	4
Odessa	9	5	1	15
Orange	4	2	0	6
Orleans	2	3	0	5
Otisco	7	5	0	12
Portland	11	11	0	22
Ronald	5	2	0	7
Sebewa	1	3	0	4
Annual Utility		7		7
TOTALS	97	77	3	177

Additional Countywide Permits

Oversize/Overweight Permits

Single 107
Annual 123

Mobile/Modular Home Permits

Single 66
Annual 3

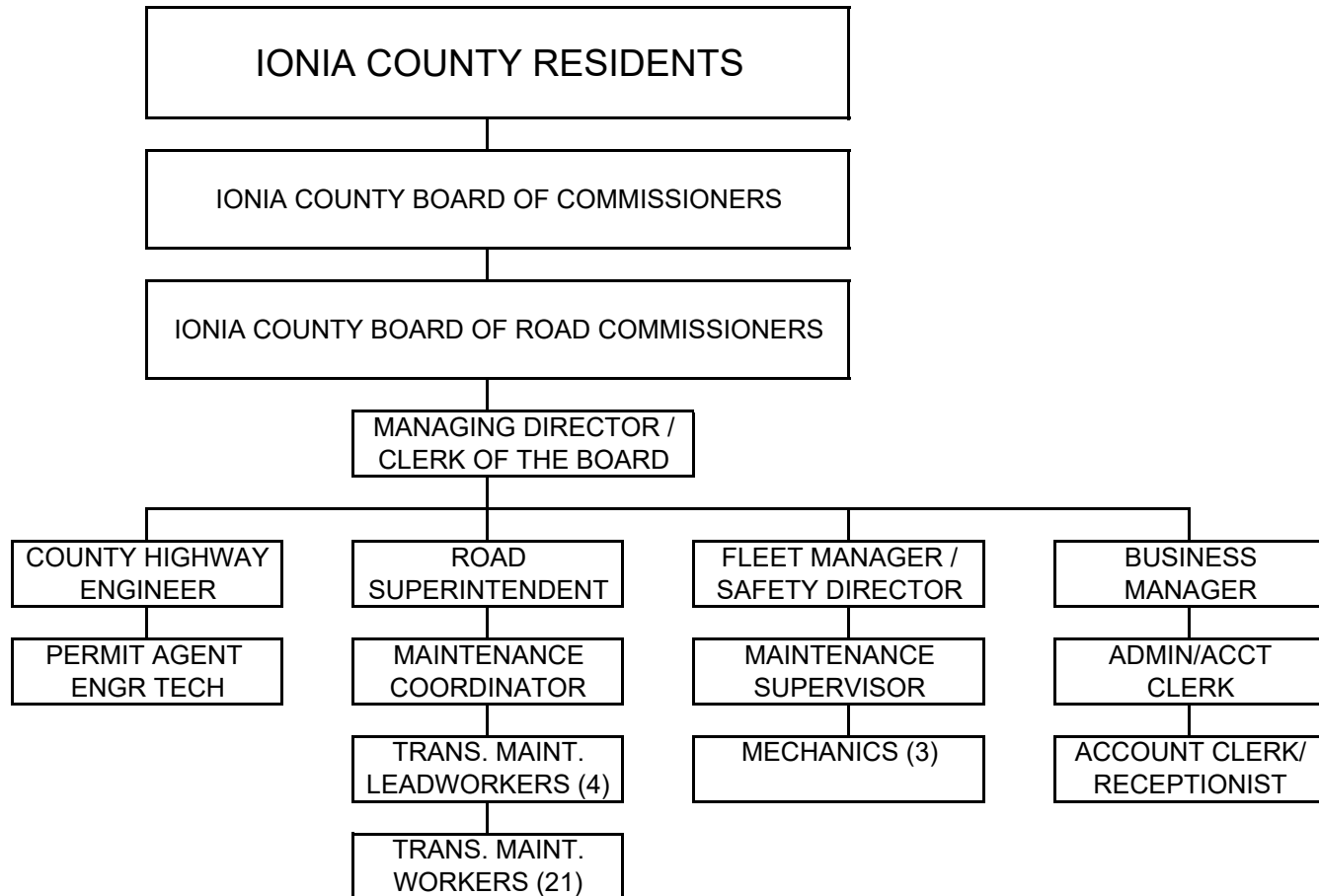
Buildings and Special Loads 0

Seasonal Haul Route Permits 85

MDOT State Trunkline Permits: 0

TOTAL: 384

ROAD COMMISSION FOR IONIA COUNTY
ORGANIZATIONAL CHART





Follow us on Facebook

