

THE ROAD COMMISSION FOR IONIA COUNTY

170 E. RIVERSIDE DRIVE
PO BOX 76
IONIA, MI 48846
www.ioniacountyroads.org

Follow us on
Facebook



2016
SUPPLEMENTAL
ANNUAL REPORT



Historical marker at Grand River Avenue & Morrison Lake Road

ROAD COMMISSION FOR IONIA COUNTY

170 EAST RIVERSIDE DRIVE

IONIA, MICHIGAN

2016

SUPPLEMENTAL ANNUAL REPORT

ALBERT A. ALMY, CHAIRPERSON

KAREN D. BOTA, VICE-CHAIR

CHARLES G. MINKLEY, MEMBER

WILLIAM E. WEISGERBER, MEMBER

KENNETH L. GASPER, MEMBER

DOROTHY G. POHL, MANAGING DIRECTOR

PAUL A. SPITZLEY, COUNTY HIGHWAY ENGINEER

ROAD COMMISSION FOR IONIA COUNTY

170 E. Riverside Drive • P.O. Box 76 • Ionia, Michigan 48846 • Phone (616) 527-1700 • Fax (616) 527-8848

CHARLES G. MINKLEY
Commissioner

KENNETH L. GASPER
Commissioner

ALBERT A. ALMY
Commissioner

KAREN D. BOTA
Commissioner

ROBERT G. DUNTON
Commissioner

DOROTHY G. POHL, CPA
Managing Director

PAUL A. SPITZLEY, P.E.
County Highway Engineer

April 12, 2017

The Honorable Board of County Commissioners
County of Ionia, Michigan
County Courthouse
Ionia, Michigan 48846

Dear Commissioners:

We are pleased to present for your review our Supplemental Annual Report for 2016. The formal accounting report required by law will be submitted to the Michigan Department of Transportation and the Ionia County Clerk by May 1, 2017. We have begun meeting with many of our townships this month and will continue throughout the year. This report will be presented and distributed to each township official at their regular monthly meetings or mailed to the township clerk.

As in the past, we will continue to search for the most efficient and effective methods to accomplish our work and give the taxpayers the "best bang for their buck." We will continue to evaluate both services and service levels to optimize the expenditure of new transportation funding.

We sincerely appreciate the help and support that the County Board and all the Township Boards in Ionia County have given us over the past year. We look forward to our continued good working relationship to provide the highest possible level of safety and service on Ionia County roads and bridges.

Respectfully submitted on behalf of the Board of County Road Commissioners for Ionia County,

Dorothy G. Pohl

Dorothy G. Pohl
Managing Director/Clerk of the Board
Ionia County Road Commission

TABLE OF CONTENTS
Road Commission for Ionia County
2016 Annual Report

Introduction	1 - 2
2016 Revenue and Expenditure Charts	3
History of Major Revenues	4
2016 Financial Summary with Comparative Data	5
2016 Primary Routine Maintenance Expenditures by Township	6
2016 Local Routine Maintenance Expenditures by Township.....	7
2016 Primary and Local Maintenance by Type.....	8
Primary and Local Projects by Township	9 - 12
Schedule of Capital Outlay.....	13
Status of Road Mileage by Township.....	14
2016 Right of Way Permits Issued	15
Organization Chart	16

INTRODUCTION

Road Commission for Ionia County 2016 Annual Report

“With pride, the Road Commission for Ionia County strives to provide the highest quality roads and bridges to public and commercial users in the most effective manner possible.”

This statement encompasses the mission of the Road Commission. This Annual Report documents our 2016 projects and financial activities and is designed to show how we strive to meet our goals.

The Road Commission for Ionia County was established in 1919 by a vote of the citizens of Ionia County and charged by law with the duty “to keep in reasonable repair, so that they shall be reasonably safe and convenient for public travel, all county roads, bridges and culverts that are under their care and control, and which are open to public travel”. State laws also require the Road Commission to permit and regulate certain activities in the road right of way, to enforce state restrictions on vehicle size and weight, and to set reasonable standards for adopting new roads into the county system.

Over the past 97 years, the Ionia County road system has grown to include 389 miles that are now designated as County Primary roads. Passage of the McNitt Act in 1931 abolished the old township road system and transferred all miles of township roads to the Road Commission during the 1930’s. These old township roads, together with new roads built since then make up what is now the 684-mile system of County Local roads. Overall, 35% or 378 miles of all Ionia County roads are paved, with the remaining 696 miles being either gravel surfaced or unimproved.

The Michigan Transportation Fund (MTF) is the depository of fuel taxes and vehicle registration fees collected by the state and is the principal source of road commission funding. The collected funds are distributed by a complicated, yet transparent and verifiable formula to the Michigan Department of Transportation (MDOT), 535 cities and villages, and the 83 county road agencies. Our total MTF revenues for 2016 were up slightly (3%), and we will begin to see new revenue generated in 2017 from the 2015 transportation funding package passed by the legislature.

The Road Commission works very hard to take advantage of any available special funds, such as Michigan Economic Development Funds (Category A, D & F) and Federal funds (STP and SAF) to shore up revenues. We have worked closely with the Michigan Department of Transportation on development of safety programs under the original Federal program and have submitted projects for future project funding under the Local Safety Program. We finished up one prior year safety improvement project during 2016 and worked on a new approved project for 2016, adding shoulders on portions of Keefer Highway. We were able to tackle a major rehabilitation project on 2 miles of Divine

Highway from David to Marsalle, utilizing both our employees and contractors. This project would not have been possible without a substantial contribution from Portland Township.

Over the past 22 years, over \$20 million dollars have been invested to replace county bridges. This work was possible through funding provided by the Federal Highway Administration, State of Michigan Local Bridge Program, and our townships. We received grant funding to replace the David Highway bridge over Libhart Creek during 2016. This new \$1.3 million-dollar bridge would not have been possible without Federal and State funds, along with substantial support from Orange Township.

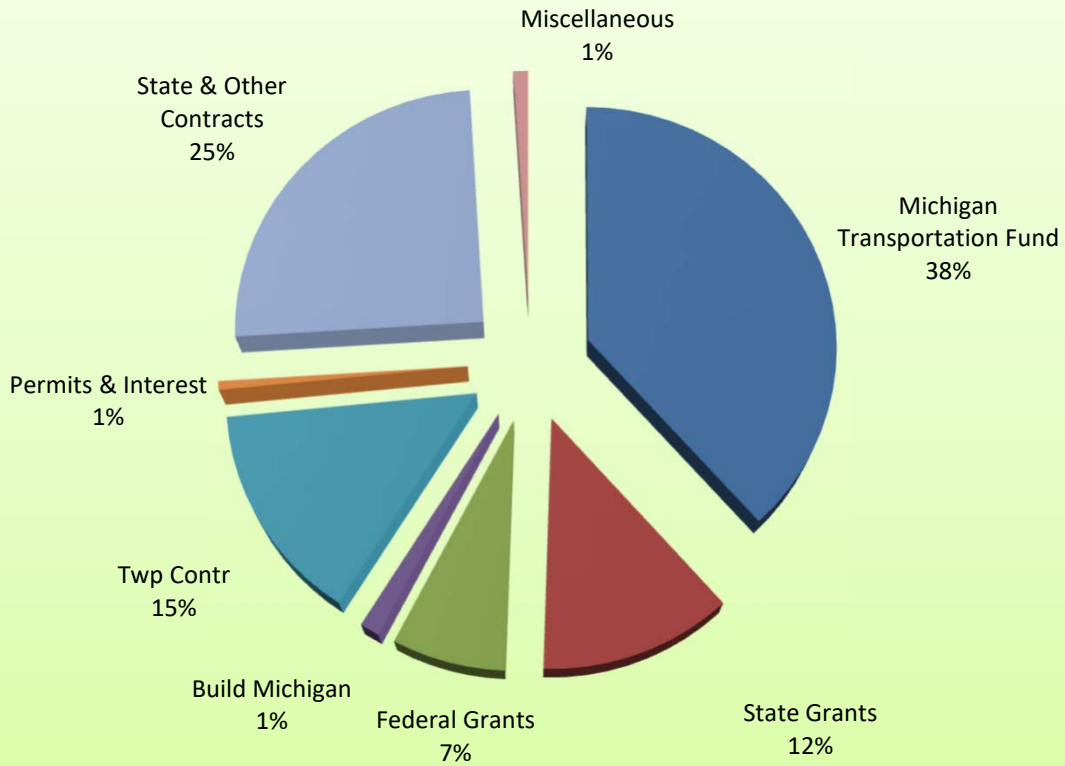
While we did not have a formal Local Road Matching Program in 2016, we continued to cover most internal charges for work performed by road commission forces on township selected projects. The total cost of that limited program was \$268,386, or an average of \$16,774 per township. Financial assistance from our townships contributed \$1.9 million dollars for improvements and additional maintenance on the local road system. Without this township assistance, most local roads would see very little improvement. This partnership helps provide better service to our joint constituencies and promote a higher quality of life.

As we mentioned earlier, the Legislature passed a major transportation funding package in late 2015 – the first since 1997. While we are very pleased that the funding issue has finally been addressed by the State, the funding provided by the changes does not start flowing until mid-2017. The condition of our road system continues to decline and the funding we do receive will not allow us to catch up and get ahead of the curve. Even with the new revenue, it may be necessary to turn some currently paved roads back to gravel in the next three years. We are performing strategic planning for the next 5-10 years. A goal of the strategic planning is to identify the most cost efficient improvements, aiding the most travelers over the most miles of road possible. We firmly believe that an Asset Management approach is the only hope we have to turn our system around and it is going to take a lot of time to get it done.

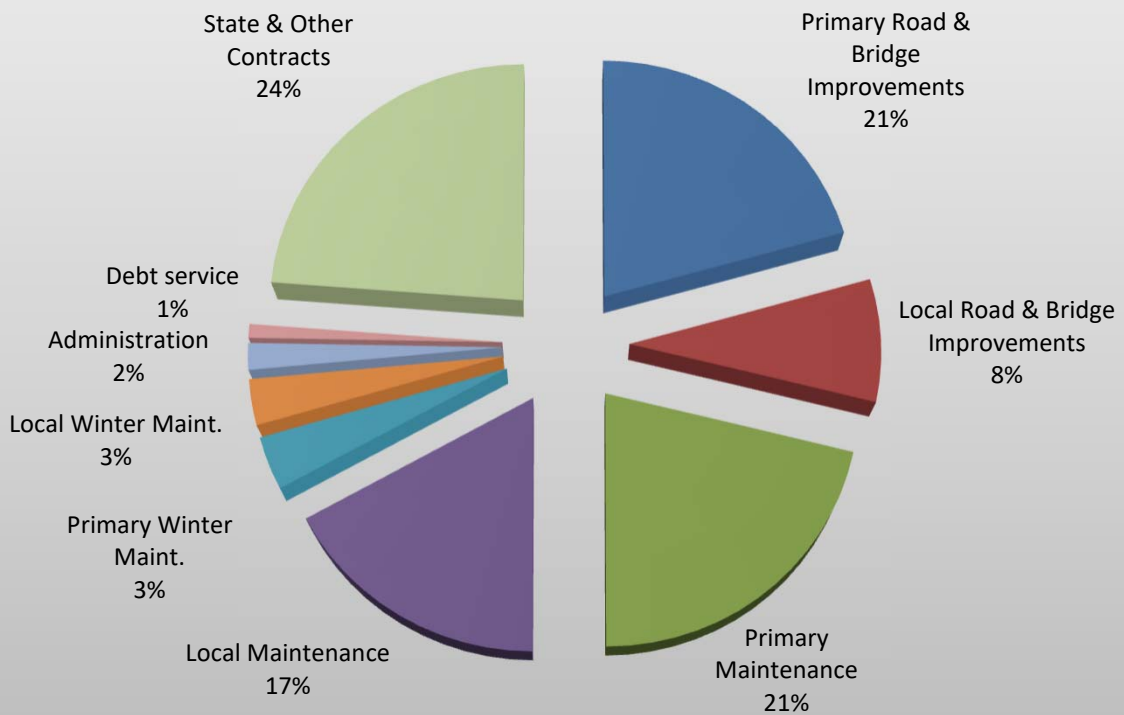
The Congress passed and the President signed a longer-term Federal Transportation Program in November 2015 as well. The funding package, known as the Fixing America's Transportation System (FAST Act) will maintain current levels of Federal funding over the next five years. We also need to continue to seriously examine the long-term outlook for transportation financing at all levels - Federal, State and County.

Our Road Commission employees are a vital element of our equation. We appreciate their hard work and dedication. We were happy to be able to add an additional driver this year due to increased responsibilities and budgeted funds from MDOT. Our employees continue to work very hard to provide a reasonable service level to you and other county residents. As this report shows, the Road Commission for Ionia County and its employees, your local road professionals, are faithfully working to fulfill the commission's mandate to provide safe and convenient roads.

ICRC 2016 REVENUES



ICRC 2016 EXPENDITURES



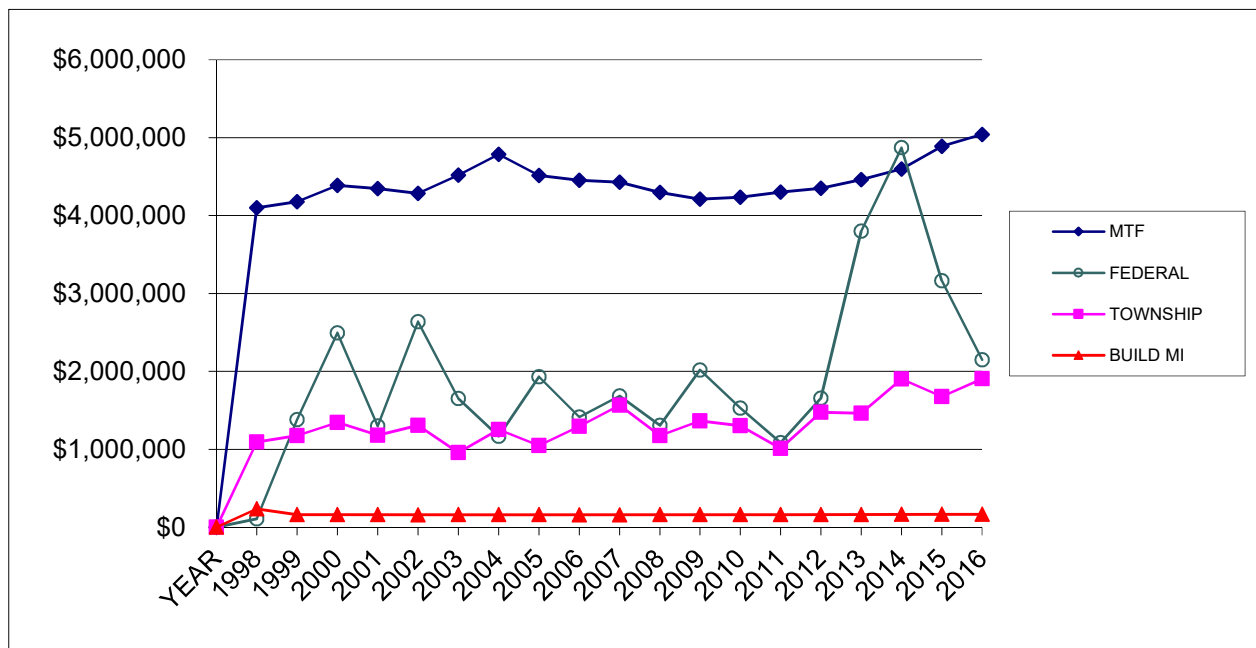
IONIA COUNTY ROAD COMMISSION

History of MTF Revenue

Township Contributions and Federal/State Aid

YEAR	MTF COUNTY SHARE	BUILD MI MTF	FEDERAL STATE	TOWNSHIP CONTRIBUTIONS	TWP CONTR AS % OF MTF
1998	\$ 4,098,990	\$ 234,473	\$ 108,494	\$ 1,094,049	27%
1999	\$ 4,177,338	\$ 160,238	\$ 1,382,346	\$ 1,175,931	28%
2000	\$ 4,388,604	\$ 159,875	\$ 2,495,881	\$ 1,344,917	31%
2001	\$ 4,345,328	\$ 159,261	\$ 1,298,266	\$ 1,177,470	27%
2002	\$ 4,286,062	\$ 158,213	\$ 2,636,751	\$ 1,305,601	30%
2003	\$ 4,518,602	\$ 159,082	\$ 1,649,975	\$ 955,860	21%
2004	\$ 4,786,647	\$ 161,212	\$ 1,167,282	\$ 1,253,636	26%
2005	\$ 4,515,197	\$ 159,113	\$ 1,929,262	\$ 1,046,112	23%
2006	\$ 4,453,393	\$ 157,915	\$ 1,413,450	\$ 1,295,117	29%
2007	\$ 4,427,614	\$ 157,846	\$ 1,684,459	\$ 1,564,583	35%
2008	\$ 4,296,173	\$ 159,041	\$ 1,306,380	\$ 1,174,721	27%
2009	\$ 4,209,680	\$ 160,364	\$ 2,016,716	\$ 1,363,984	32%
2010	\$ 4,235,886	\$ 161,075	\$ 1,530,104	\$ 1,304,006	31%
2011	\$ 4,301,927	\$ 161,420	\$ 1,085,778	\$ 1,010,200	23%
2012	\$ 4,349,562	\$ 161,552	\$ 1,656,083	\$ 1,475,562	34%
2013	\$ 4,460,278	\$ 161,971	\$ 3,801,355	\$ 1,464,523	33%
2014	\$ 4,597,456	\$ 163,510	\$ 4,871,257	\$ 1,900,752	41%
2015	\$ 4,887,240	\$ 165,373	\$ 3,161,690	\$ 1,677,466	34%
2016	\$ 5,042,418	\$ 165,978	\$ 2,149,523	\$ 1,904,905	38%

ICRC - REVENUE BREAKDOWN



IONIA COUNTY ROAD COMMISSION
2016 FINANCIAL SUMMARY
WITH COMPARISON DATA

REVENUES	2012	2013	2014	2015	2016	PRELIMINARY 2017
	ACTUAL	ACTUAL	ACTUAL	ACTUAL	ACTUAL	BUDGET
Beginning Fund Balance	\$1,644,654	\$1,850,587	\$1,679,103	\$1,967,089	\$2,761,647	\$1,805,534
Permit Revenues	\$52,715	\$55,080	\$67,691	\$81,046	\$75,613	\$82,667
Federal Funds	\$1,628,786	\$1,090,447	\$3,261,834	\$1,752,455	\$942,899	\$884,949
Michigan Transportation Funds	\$4,511,114	\$4,622,249	\$4,760,966	\$5,052,613	\$5,208,396	\$6,256,410
State Critical Bridge Funds	\$0	\$2,368,827	\$515,411	\$617,871	\$1,206,624	\$0
State Economic Development Funds	\$27,297	\$342,081	\$1,094,012	\$791,364	\$397,876	\$375,000
County Board Appropriation	\$275,172	\$35,000	\$0	\$0	\$0	\$0
City, Private, Other Contributions	\$268,159	\$168,672	\$188,632	\$99,636	\$42,546	\$100,000
Township Contributions	\$1,475,562	\$1,464,523	\$1,900,752	\$1,677,466	\$1,904,905	\$1,711,015
State Trunkline Contract	\$1,305,150	\$1,384,449	\$1,804,067	\$1,485,747	\$3,287,739	\$1,467,462
Interest Income	\$3,966	\$2,866	\$1,422	\$870	\$1,169	\$1,000
Equipment Rental Credits	\$1,544,972	\$1,866,885	\$2,218,884	\$2,169,385	\$2,329,686	\$1,650,000
Lease Proceeds	\$95,200	\$135,000	\$226,000	\$220,000	\$202,480	\$0
Transfer in/Adjustments	\$0	\$0	\$0	\$0	\$0	\$0
Miscellaneous Income	\$94,280	\$7,088	\$104,985	\$178,986	\$87,212	\$40,000
TOTAL REVENUES	\$12,927,027	\$15,393,754	\$17,823,759	\$16,094,528	\$18,448,792	\$14,374,037

EXPENDITURES

Primary Heavy Maintenance-Road	\$2,279,424	\$2,350,759	\$932,818	\$1,029,229	\$1,481,799	\$1,195,959
Primary Heavy Maintenance-Bridge	\$109,296	\$2,702,305	\$2,808,674	\$966,426	\$1,375,726	\$27,000
Primary Routine Maintenance	\$1,262,181	\$1,172,228	\$961,467	\$1,304,701	\$1,275,191	\$1,022,339
Primary Preventive Maintenance	\$339,821	\$85,222	\$1,795,111	\$1,029,969	\$1,654,554	\$1,402,500
Primary Winter Maintenance	\$242,323	\$451,603	\$481,883	\$376,830	\$483,260	\$425,000
Local Heavy Maintenance-Road	\$1,082,914	\$674,772	\$1,009,289	\$1,185,797	\$1,118,633	\$802,460
Local Heavy Maintenance-Bridge	\$0	\$24,444	\$0	\$0	\$0	\$10,404
Local Routine Maintenance	\$1,558,755	\$1,703,713	\$1,506,801	\$1,829,568	\$1,763,170	\$1,580,842
Local Preventive Maintenance	\$609,601	\$618,352	\$906,676	\$628,596	\$583,615	\$909,358
Local Winter Maintenance	\$179,112	\$398,189	\$804,377	\$421,532	\$417,716	\$450,000
State Trunkline Maintenance	\$1,224,820	\$1,267,387	\$1,728,585	\$1,485,830	\$3,137,205	\$1,467,462
Equipment Expense	\$1,340,265	\$1,481,650	\$2,042,878	\$1,615,850	\$1,614,672	\$1,628,840
Equipment Depreciation	\$349,661	\$374,026	\$288,747	\$404,178	\$522,285	\$450,000
Administrative Expense	\$327,469	\$305,993	\$303,982	\$358,675	\$236,408	\$507,175
Engineering Expense	\$36,334	\$64,070	\$43,840	\$30,923	\$6,417	\$36,769
Maintenance-Other Units	\$21,040	\$40,416	\$86,816	\$125,058	\$42,396	\$30,000
Capital Outlay	\$337,181	\$324,589	\$396,730	\$825,958	\$862,562	\$858,700
Debt Service	\$125,902	\$48,958	\$142,672	\$117,939	\$125,170	\$117,000
Ending Fund Balance	\$1,850,589	\$1,679,104	\$1,967,061	\$2,761,647	\$2,270,298	\$1,902,229
EXPENDITURES	\$13,276,688	\$15,767,780	\$18,208,407	\$16,498,706	\$18,971,077	\$14,824,037
LESS: EQUIPMENT DEPRECIATION	(\$349,661)	(\$374,026)	(\$384,648)	(\$404,178)	(\$522,285)	(\$450,000)
TOTAL EXPENDITURES	\$12,927,027	\$15,393,754	\$17,823,759	\$16,094,528	\$18,448,792	\$14,374,037

IONIA COUNTY ROAD COMMISSION
2016 PRIMARY ROAD AND BRIDGE ROUTINE/WINTER MAINTENANCE
Summary by Township

TOWNSHIP	COST	MILES	PER MILE
BERLIN	\$139,823	29.39	\$4,757.50
BOSTON	\$181,112	30.33	\$5,971.38
CAMPBELL	\$72,986	19.08	\$3,825.26
DANBY	\$121,582	23.46	\$5,182.52
EASTON	\$103,539	26.43	\$3,917.48
IONIA	\$137,103	23.33	\$5,876.68
KEENE	\$141,278	28.39	\$4,976.33
LYONS	\$67,240	18.70	\$3,595.72
NORTH PLAINS	\$91,712	26.49	\$3,462.14
ODESSA	\$66,619	19.82	\$3,361.20
ORANGE	\$184,957	31.33	\$5,903.51
ORLEANS	\$85,657	20.19	\$4,242.55
OTISCO	\$100,783	20.76	\$4,854.67
PORTLAND	\$84,248	19.51	\$4,318.20
RONALD	\$93,332	31.36	\$2,976.15
SEBEWA	\$86,481	21.13	\$4,092.81

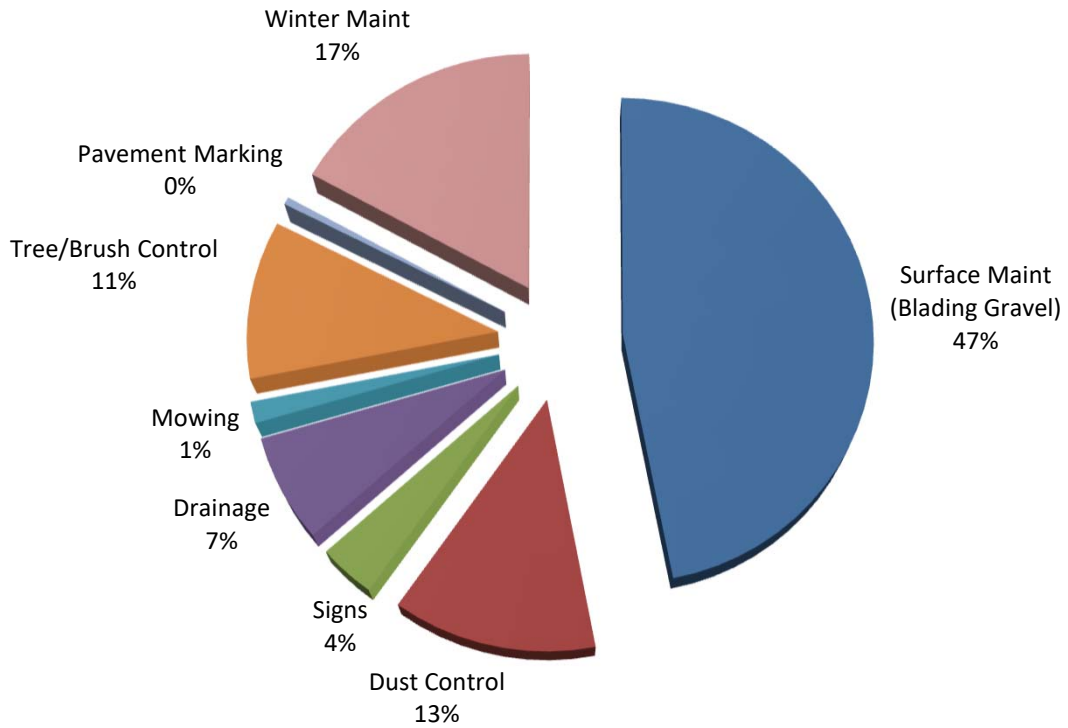
TOTAL 2016
 PRIMARY ROUTINE/WINTER
 MAINTENANCE \$1,758,452 389.70 \$4,512.32

IONIA COUNTY ROAD COMMISSION
2016 LOCAL ROAD AND BRIDGE ROUTINE/WINTER MAINTENANCE
Summary by Township

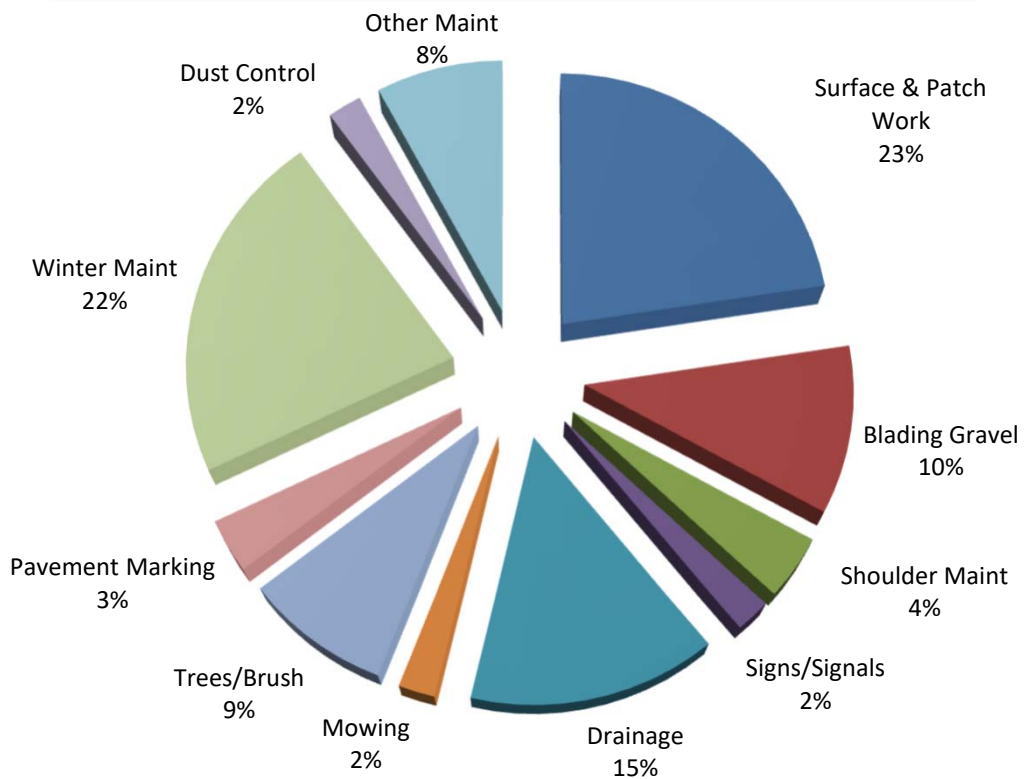
TOWNSHIP	ICRC COST	MILES	AVERAGE PER MILE
BERLIN	\$126,305	42.96	\$2,940.06
BOSTON	\$177,792	36.42	\$4,881.71
CAMPBELL	\$135,573	43.56	\$3,112.33
DANBY	\$181,002	46.19	\$3,918.64
EASTON	\$92,999	35.79	\$2,598.46
IONIA	\$127,954	42.30	\$3,024.92
KEENE	\$133,964	40.28	\$3,325.82
LYONS	\$148,815	45.19	\$3,293.10
NORTH PLAINS	\$128,088	42.47	\$3,015.96
ODESSA	\$164,564	55.52	\$2,964.05
ORANGE	\$68,401	25.95	\$2,635.88
ORLEANS	\$146,433	47.47	\$3,084.75
OTISCO	\$153,567	46.81	\$3,280.65
PORTLAND	\$158,019	42.94	\$3,680.00
RONALD	\$105,203	36.24	\$2,902.95
SEBEWA	\$132,209	51.41	\$2,571.66

TOTAL 2016
 LOCAL ROUTINE/WINTER
 MAINTENANCE \$2,180,888 681.50 \$3,200.13

2016 LOCAL ROAD MAINTENANCE BY TYPE



2016 PRIMARY ROAD MAINTENANCE BY TYPE



IONIA COUNTY ROAD COMMISSION
2016 Primary Road and Bridge Projects
Listed by Township

TOWNSHIP	DESCRIPTION	2016 TOTAL COST	FEDERAL/ STATE FUNDS	TOWNSHIP FUNDS
DANBY	Grand River Safety	\$ 8,576		
EASTON	Crack/Chip/Fog Seal - Ellison, Johnson	\$ 131,480		\$ 131,480
LYONS	Keefer Safety	\$ 6,247		
ORANGE	Bridge Replacement-David Hwy	\$ 1,347,844	\$ 1,183,122	\$ 81,431
	Keefer Safety	\$ 215,075	\$ 158,351	
PORTLAND	Bridge Prev. Maint.-David Hwy	\$ 27,882	\$ 23,501	
	Reconstruction - Divine Hwy	\$ 962,976		\$ 200,000
	Keefer Safety	\$ 215,075	\$ 158,351	
MISC	Engineering-future projects	\$ 8,017		
	Countywide Chip & Fog Seal Prev Maint Nash, Hawley, Sayles, Marble, Miriam, Feuerstein, Richmond, Zahm, David, Kelsey, Riverside, Clarksville, Kent, Grand River	\$ 1,536,155	\$ 626,196	
	Total	\$ 4,459,327	\$ 2,149,521	\$ 412,911



David Hwy Bridge over Libhart Creek

IONIA COUNTY ROAD COMMISSION
2016 Local Road and Bridge Projects
Listed by Township

TOWNSHIP	DESCRIPTION	PROJECT COST	TOWNSHIP CONTRIBUTION
BERLIN	Drainage and Culvert Replacements	\$ 3,293	\$ 39
	Dust Control Applications	\$ 20,055	\$ 20,055
	Crack/Chip/Fog Seal - Peck Lake Road, Schoolboy Subdivision, Harwood Rd	\$ 59,824	\$ 59,824
	Total	\$ 83,172	\$ 79,918
BOSTON	Drainage and Culvert Replacements	\$ 8,121	\$ 523
	6000 cyds Gravel Resurfacing	\$ 73,321	\$ 63,007
	Dust Control Applications	\$ 33,856	\$ 33,856
	Total	\$ 115,298	\$ 97,386
CAMPBELL	Drainage and Culvert Replacements	\$ 7,143	\$ 699
	6000 cyds Gravel Resurfacing	\$ 72,371	\$ 62,551
	Dust Control Applications	\$ 26,012	\$ 26,012
	Total	\$ 105,526	\$ 89,262
DANBY	Drainage and Culvert Replacements	\$ 5,064	\$ 649
	Dust Control Applications	\$ 27,922	\$ 27,922
	8000 cyds Gravel Resurfacing	\$ 109,835	\$ 99,036
	Brush cut - Peake Rd	\$ 2,680	\$ 1,329
	Total	\$ 145,501	\$ 128,936
EASTON	Drainage and Culvert Replacements	\$ 729	\$ -
	Dust Control Applications	\$ 17,462	\$ 17,462
	6750 cyds Gravel Resurfacing	\$ 68,599	\$ 62,796
	Chip/Fog Seal - Hardendorf's Subdivision	\$ 47,553	\$ 47,553
	Total	\$ 134,343	\$ 127,811

IONIA COUNTY ROAD COMMISSION
2016 Local Road and Bridge Projects
Listed by Township

TOWNSHIP	DESCRIPTION	PROJECT COST	TOWNSHIP CONTRIBUTION
IONIA	Drainage and Culvert Replacements	\$ 5,908	\$ 526
	Dust Control Applications	\$ 18,206	\$ 18,206
	East Main & Stage Safety	\$ 5,000	\$ 5,000
	5700 cyds Gravel Resurfacing	\$ 52,749	\$ 45,343
	Kellogg Rd Trees	\$ 18,864	\$ 18,864
	Frank Road Trees/widen	\$ 129,310	\$ 122,155
	Total	\$ 230,037	\$ 210,094
KEENE	Drainage and Culvert Replacements	\$ 4,989	\$ 142
	Dust Control Applications	\$ 22,939	\$ 22,939
	4000 cyds Gravel Resurfacing	\$ 45,774	\$ 41,042
	Total	\$ 73,702	\$ 64,123
LYONS	Drainage and Culvert Replacements	\$ 3,062	\$ 122
	Dust Control Applications	\$ 21,770	\$ 21,770
	Pewamo Rd Asphalt Resurfacing	\$ 72,408	\$ 71,792
	4000 cyds Gravel Resurfacing	\$ 31,195	\$ 27,468
	Cut Brush-Ross Road	\$ 9,792	\$ 4,920
	Total	\$ 138,227	\$ 126,072
NORTH PLAINS	Drainage and Culvert Replacements	\$ 3,996	\$ 1,015
	Crack Seal - O'Brien Road	\$ 5,102	\$ 5,102
	Dust Control Applications	\$ 11,865	\$ 11,865
	5500 cyds Gravel Resurfacing	\$ 41,980	\$ 38,497
	Total	\$ 62,943	\$ 56,479
ODESSA	Drainage and Culvert Replacements	\$ 7,582	\$ 19
	Dust Control Applications	\$ 22,596	\$ 22,596
	4000 cyds Gravel Resurfacing	\$ 48,840	\$ 42,084
	Tupper Lk bridge deck resurfacing	\$ 7,587	\$ 3,795
	Total	\$ 86,605	\$ 68,494

IONIA COUNTY ROAD COMMISSION
2016 Local Road and Bridge Projects
Listed by Township

TOWNSHIP	DESCRIPTION	PROJECT COST	TOWNSHIP CONTRIBUTION
ORANGE	Drainage and Culvert Replacements	\$ 7,108	\$ 496
	Dust Control Applications	\$ 9,084	\$ 9,084
	2000 cyds Gravel Resurfacing	\$ 19,803	\$ 18,228
	Total	\$ 35,995	\$ 27,808
ORLEANS	Drainage and Culvert Replacements	\$ 4,313	\$ 226
	Dust Control Applications	\$ 25,809	\$ 25,809
	5500 cyds Gravel Resurfacing	\$ 54,322	\$ 49,478
	Total	\$ 84,444	\$ 75,513
OTISCO	Drainage and Culvert Replacements	\$ 729	\$ -
	Dust Control Applications	\$ 21,067	\$ 21,067
	5800 cyds Gravel Resurfacing	\$ 66,273	\$ 58,476
	Montcalm Ave Limestone Resurfacing	\$ 35,672	\$ 30,650
	Culvert Replacement-Palmer Rd	\$ 18,258	\$ 4,334
	Crack/Chip/Fog Seal - Krupp Road	\$ 11,510	\$ 11,510
	Total	\$ 153,509	\$ 126,037
PORTLAND	Drainage and Culvert Replacements	\$ 1,792	\$ 314
	Dust Control Applications	\$ 26,790	\$ 26,790
	7500 cyds Gravel Resurfacing	\$ 69,527	\$ 61,812
	Total	\$ 98,109	\$ 88,916
RONALD	Dust Control Applications	\$ 29,307	\$ 29,307
	2800 cyds Gravel Resurfacing	\$ 23,115	\$ 22,996
	Total	\$ 52,422	\$ 52,303
SEBEWA	Drainage and Culvert Replacements	\$ 5,916	\$ 123
	Dust Control Applications	\$ 29,724	\$ 29,724
	7,000 cyds Gravel Resurfacing	\$ 74,517	\$ 66,225
	Total	\$ 110,157	\$ 96,072

IONIA COUNTY ROAD COMMISSION
2016 CAPITAL OUTLAY
Equipment Purchases

Road Equipment:

Shoulder conditioner	\$9,865
Chainsaws/pole pruners	\$3,095
Sandvik blades	\$6,094
Tandem Axle Dump Trucks (2) - fully equipped	\$427,566
Rear observation cameras	\$2,416
Utility trailer - 14,000 lb. capacity	\$4,014
Loader	\$257,480
Radios	\$1,280
Sander	\$3,766



Office Equipment:

Computers	\$3,626
-----------	---------

Shop Equipment:

Generator down payment	\$33,000
------------------------	----------

Building & Improvements:

Fabric storage building	\$9,425
Salt shed extension	\$10,920

TOTAL 2016 CAPITAL OUTLAY EXPENSE **\$772,547**



IONIA COUNTY ROAD COMMISSION

STATUS OF ROAD MILEAGE

July 1, 2016

Township	Primary Roads		Local Roads		Hard Surface Total	Gravel Surface Total	Total Miles in Twp.	% Hard Surface to Total
	Hard Surface	Gravel Surface	Hard Surface	Gravel Surface				
BERLIN	29.39	0.00	12.94	30.02	42.33	30.02	72.35	58.51%
BOSTON	25.50	4.83	2.28	33.99	27.78	38.82	66.60	41.71%
CAMPBELL	13.15	5.93	0.05	43.63	13.20	49.56	62.76	21.03%
DANBY	16.52	6.89	1.25	45.49	17.77	52.38	70.15	25.33%
EASTON	26.43	0.00	7.54	28.31	33.97	28.31	62.28	54.54%
IONIA	20.86	2.47	13.44	29.38	34.30	31.85	66.15	51.85%
KEENE	23.92	4.64	0.00	40.28	23.92	44.92	68.84	34.75%
LYONS	15.70	3.00	1.10	44.50	16.80	47.50	64.30	26.13%
NORTH PLAINS	18.69	7.80	1.97	40.50	20.66	48.30	68.96	29.96%
ODESSA	16.82	3.00	0.84	54.84	17.66	57.84	75.50	23.39%
ORANGE	23.26	8.07	0.33	25.49	23.59	33.56	57.15	41.28%
ORLEANS	16.50	3.59	1.55	46.03	18.05	49.62	67.67	26.67%
OTISCO	16.59	3.99	4.66	42.15	21.25	46.14	67.39	31.53%
PORTLAND	17.30	2.21	5.17	38.52	22.47	40.73	63.20	35.55%
RONALD	21.76	9.54	1.09	35.39	22.85	44.93	67.78	33.71%
SEBEWA	21.13	0.00	0.00	51.41	21.13	51.41	72.54	29.13%
TOTAL	323.52	65.96	54.21	629.93	377.73	695.89	1073.62	35.18%

IONIA COUNTY ROAD COMMISSION

RIGHT-OF-WAY PERMITS ISSUED

January 1, 2016 through December 31, 2016

Township	Residential / Farm Drive	Utility	Commercial Drive	Total Permits
Berlin	3	1	1	5
Boston	4	1	2	7
Campbell	2	2	1	5
Danby	10	1	0	11
Easton	7	2	0	9
Ionia	1	0	1	2
Keene	4	0	0	4
Lyons	3	0	0	3
North Plains	2	0	0	2
Odessa	8	0	0	8
Orange	0	2	0	2
Orleans	4	0	0	4
Otisco	1	2	0	3
Portland	15	2	0	17
Ronald	2	0	0	2
Sebewa	2	1	0	3
Annual Utility		7		7
TOTALS	68	21	5	94

Additional Countywide Permits

Oversize/Overweight Permits

Single 63
Annual 111

Mobile/Modular Home Permits

Single 30
Annual 7

Buildings and Special Loads

1

Seasonal Haul Route Permits

78

MDOT State Trunkline Permits:

0

TOTAL: 290

ROAD COMMISSION FOR IONIA COUNTY
ORGANIZATIONAL CHART

