



THE ROAD COMMISSION FOR IONIA COUNTY

2015 SUPPLEMENTAL ANNUAL REPORT



*All Photos:
David Hwy Bridge over the Grand River
Top - view from underneath
Left - pre-maintenance
Bottom - post-maintenance*

170 E. RIVERSIDE DRIVE
PO BOX 76
IONIA, MI 48846

www.ioniacountyroads.org



ROAD COMMISSION FOR IONIA COUNTY

170 EAST RIVERSIDE DRIVE

IONIA, MICHIGAN

2015

SUPPLEMENTAL ANNUAL REPORT

KENNETH L. GASPER, CHAIRMAN

ALBERT A. ALMY, VICE-CHAIRMAN

WILLIAM E. WEISGERBER, MEMBER

KAREN D. BOTA, MEMBER

CHARLES G. MINKLEY, MEMBER

DOROTHY G. POHL, MANAGING DIRECTOR

PAUL A. SPITZLEY, COUNTY HIGHWAY ENGINEER

ROAD COMMISSION FOR IONIA COUNTY

170 E. Riverside Drive • P.O. Box 76 • Ionia, Michigan 48846 • Phone (616) 527-1700 • Fax (616) 527-8848

CHARLES G. MINKLEY
Commissioner

WILLIAM E. WEISGERBER
Commissioner

KENNETH L. GASPER
Commissioner

ALBERT A. ALMY
Commissioner

KAREN D. BOTA
Commissioner

DOROTHY G. POHL, CPA
Managing Director

PAUL A. SPITZLEY, P.E.
County Highway Engineer

April 8, 2016

The Honorable Board of County Commissioners
County of Ionia, Michigan
County Courthouse
Ionia, Michigan 48846

Dear Commissioners:

We are pleased to present for your review our Supplemental Annual Report for 2015. The formal accounting report required by law will be submitted to the Michigan Department of Transportation and the Ionia County Clerk by May 1, 2016. We have begun meeting with many of our townships this month and will continue throughout the year. This report will be presented and distributed to each township official at the Ionia County Township Officer's Association meeting on April 11, 2016.

As in the past, we will continue to search for the most efficient and effective methods to accomplish our work and give the taxpayers the "best bang for their buck." We will continue to evaluate both services and service levels to optimize maintenance after our record-breaking winter this past season.

We sincerely appreciate the help and support that the County Board and all the Township Boards in Ionia County have given us over the past year. We look forward to our continued good working relationship to provide the highest possible level of safety and service on Ionia County roads and bridges.

Respectfully submitted on behalf of the Board of County Road Commissioners for Ionia County,

Dorothy G. Pohl

Dorothy G. Pohl
Managing Director/Clerk of the Board
Ionia County Road Commission

TABLE OF CONTENTS
Road Commission for Ionia County
2015 Annual Report

| | |
|---|--------|
| Introduction | 1 - 2 |
| 2015 Revenue and Expenditure Charts | 3 |
| History of Major Revenues | 4 |
| 2015 Financial Summary with Comparative Data | 5 |
| 2015 Primary Routine Maintenance Expenditures by Township | 6 |
| 2015 Local Routine Maintenance Expenditures by Township..... | 7 |
| 2015 Primary and Local Maintenance by Type..... | 8 |
| Primary and Local Projects by Township | 9 - 12 |
| Schedule of Capital Outlay..... | 13 |
| Status of Road Mileage by Township..... | 14 |
| 2015 Right of Way Permits Issued | 15 |
| Organization Chart | 16 |

INTRODUCTION

Road Commission for Ionia County

2015 Annual Report

“With pride, the Road Commission for Ionia County strives to provide the highest quality roads and bridges to public and commercial users in the most effective manner possible.”

This statement encompasses the mission of the Road Commission. This Annual Report documents our 2015 projects and financial activities and is designed to show how we strive to meet our goals.

The Road Commission for Ionia County was established in 1919 by a vote of the citizens of Ionia County and charged by law with the duty “to keep in reasonable repair, so that they shall be reasonably safe and convenient for public travel, all county roads, bridges and culverts that are under their care and control, and which are open to public travel”. State laws also require the Road Commission to permit and regulate certain activities in the road right of way, to enforce state restrictions on vehicle size and weight, and to set reasonable standards for adopting new roads into the county system.

Over the past 96 years, the Ionia County road system has grown to include 389 miles that are now designated as County Primary roads. Passage of the McNitt Act in 1931 abolished the old township road system and transferred all miles of township roads to the Road Commission during the 1930’s. These old township roads, together with new roads built since then make up what is now the 684 mile system of County Local roads. Overall, 35% or 378 miles of all Ionia County roads are paved, with the remaining 696 miles being either gravel surfaced or unimproved.

The Michigan Transportation Fund (MTF) is the depository of fuel taxes and vehicle registration fees collected by the state and is the principal source of road commission funding. The collected funds are distributed by a complicated, yet transparent and verifiable formula to the Michigan Department of Transportation (MDOT), 535 cities and villages, and the 83 county road agencies. High fuel prices have stifled growth in fuel tax collections over the past several years. While our total MTF revenues for 2015 were up slightly (3%), the state budget forecast for 2016 remains relatively flat.

The Road Commission works very hard to take advantage of any available special funds, such as Michigan Economic Development Funds (Category A & D) and Federal funds (STP) to shore up revenues. We have worked closely with the Michigan Department of Transportation on development of Safety programs under the Federal program MAP-21 and have submitted several project applications for future project funding under the Local Safety Program. We finished up 3 prior year Safety improvements during 2014. We worked on two approved Safety Program projects for 2015 – adding shoulders on portions of both Keefer Highway and Grand River Avenue. We also applied for and were awarded Michigan Economic Development Fund (TED-A) funds for improvements to 2.5 miles of Jordan Lake Road as a result of a business expansion at Cargill Kitchen Solutions.

Over the past 22 years, over \$19 million dollars have been invested to replace county bridges. This work was possible through funding provided by the Federal Highway Administration, State

of Michigan Local Bridge Program, and our townships. We received grant funding to do over \$750,000 of Preventive Maintenance work on the David Highway (Shotwell) bridge over the Grand River, including abutment work to prevent scour, steel beam repairs and painting, and concrete deck work that should extend the useful life of this major county bridge for another 50 years. This project would not have been possible without substantial support from Portland Township.

While we did not have a formal Local Road Matching Program in 2015, we continued to cover most internal charges for work performed by road commission forces on township selected projects. The total cost of that limited program was \$262,550, or an average of \$16,410 per township. Financial assistance from our townships contributed \$1.67 million dollars for improvements and additional maintenance on the local road system. Without this township assistance, most local roads would see very little improvement. This partnership helps provide better service to our joint constituencies and promote a higher quality of life.

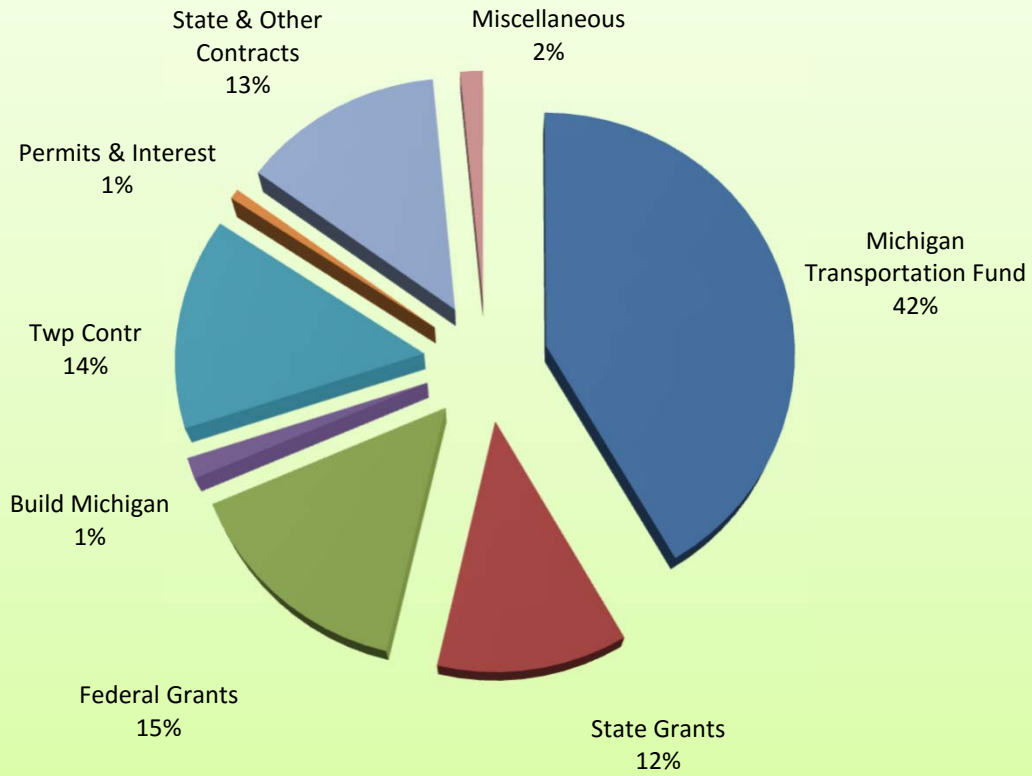
In June 2015, an F-1 tornado hit the city of Portland and took down our maintenance garage building located there. Fortunately, we did not have a great amount of damage to our county roads as a result of the tornado. We are looking at our future needs and alternatives and have made no plans for replacing the building at this time.

In November of 2015, the Legislature passed and the Governor signed a major transportation funding package – the first since 1997. While we are very pleased that the funding issue has finally been addressed by the State, the funding provided by the changes does not start flowing until mid-2017. The condition of our road system continues to decline and the funding we will see will not allow us catch up and get ahead of the curve. Even with the new revenue, it will be necessary to turn some currently paved roads back to gravel in the next three years. We are currently doing some strategic planning to identify how to accomplish the most work for the least money over the next 5-10 years. We also need to seriously examine the long term outlook for transportation financing in this state and the country.

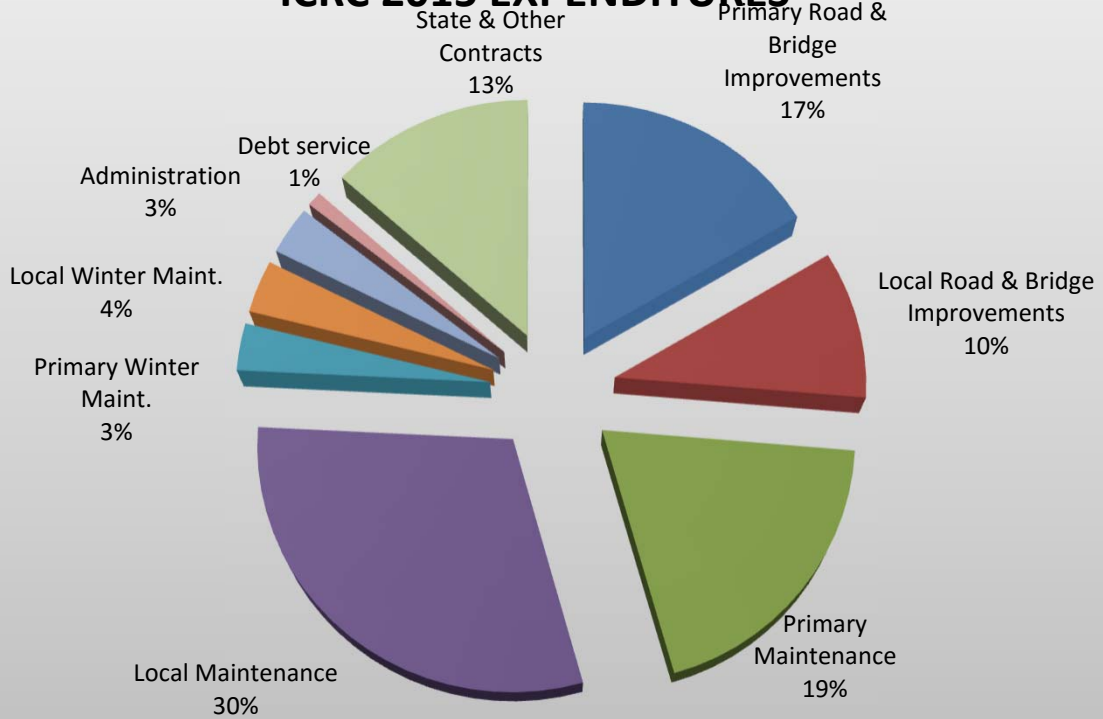
The Congress passed and the President signed a longer-term Federal Transportation Program in November 2015 as well. The funding package, known as the Fixing America's Transportation System (FAST Act) will provide additional Federal funding over the next five years. We do not yet know how much funding will be allocated to Ionia County roads and bridges.

Our Road Commission employees are a vital element of our equation. We appreciate their hard work and dedication. Even though the ranks have shrunk over the past 10 years, they continue to work very hard to provide a reasonable service level to you and other county residents. As this report shows, the Road Commission for Ionia County and its employees, your local road professionals, are faithfully working to fulfill the commission's mandate to provide safe and convenient roads.

ICRC 2015 REVENUES



ICRC 2015 EXPENDITURES



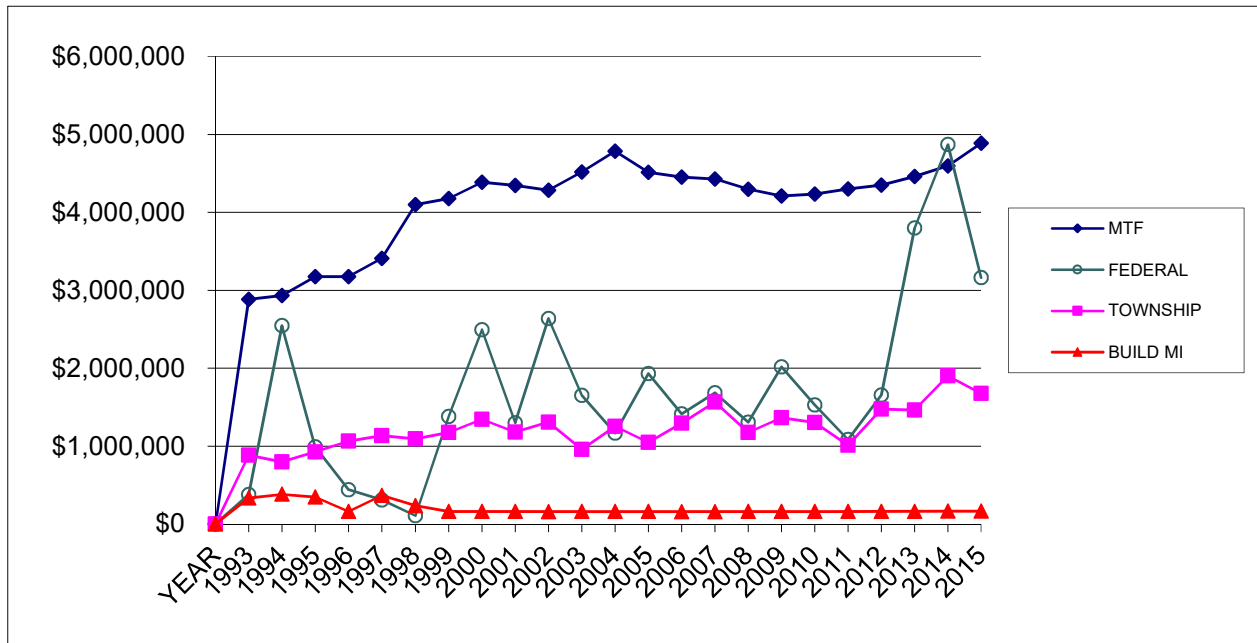
IONIA COUNTY ROAD COMMISSION

History of MTF Revenue

Township Contributions and Federal/State Aid

| YEAR | MTF COUNTY SHARE | BUILD MI MTF | FEDERAL STATE | TOWNSHIP CONTRIBUTIONS | TWP CONTR AS % OF MTF |
|------|------------------|--------------|---------------|------------------------|-----------------------|
| 1993 | \$ 2,882,221 | \$ 332,096 | \$ 376,692 | \$ 885,347 | 31% |
| 1994 | \$ 2,934,506 | \$ 381,404 | \$ 2,549,175 | \$ 799,181 | 27% |
| 1995 | \$ 3,176,208 | \$ 344,807 | \$ 992,197 | \$ 923,776 | 29% |
| 1996 | \$ 3,177,189 | \$ 161,132 | \$ 438,938 | \$ 1,065,355 | 34% |
| 1997 | \$ 3,408,285 | \$ 366,411 | \$ 306,604 | \$ 1,133,399 | 33% |
| 1998 | \$ 4,098,990 | \$ 234,473 | \$ 108,494 | \$ 1,094,049 | 27% |
| 1999 | \$ 4,177,338 | \$ 160,238 | \$ 1,382,346 | \$ 1,175,931 | 28% |
| 2000 | \$ 4,388,604 | \$ 159,875 | \$ 2,495,881 | \$ 1,344,917 | 31% |
| 2001 | \$ 4,345,328 | \$ 159,261 | \$ 1,298,266 | \$ 1,177,470 | 27% |
| 2002 | \$ 4,286,062 | \$ 158,213 | \$ 2,636,751 | \$ 1,305,601 | 30% |
| 2003 | \$ 4,518,602 | \$ 159,082 | \$ 1,649,975 | \$ 955,860 | 21% |
| 2004 | \$ 4,786,647 | \$ 161,212 | \$ 1,167,282 | \$ 1,253,636 | 26% |
| 2005 | \$ 4,515,197 | \$ 159,113 | \$ 1,929,262 | \$ 1,046,112 | 23% |
| 2006 | \$ 4,453,393 | \$ 157,915 | \$ 1,413,450 | \$ 1,295,117 | 29% |
| 2007 | \$ 4,427,614 | \$ 157,846 | \$ 1,684,459 | \$ 1,564,583 | 35% |
| 2008 | \$ 4,296,173 | \$ 159,041 | \$ 1,306,380 | \$ 1,174,721 | 27% |
| 2009 | \$ 4,209,680 | \$ 160,364 | \$ 2,016,716 | \$ 1,363,984 | 32% |
| 2010 | \$ 4,235,886 | \$ 161,075 | \$ 1,530,104 | \$ 1,304,006 | 31% |
| 2011 | \$ 4,301,927 | \$ 161,420 | \$ 1,085,778 | \$ 1,010,200 | 23% |
| 2012 | \$ 4,349,562 | \$ 161,552 | \$ 1,656,083 | \$ 1,475,562 | 34% |
| 2013 | \$ 4,460,278 | \$ 161,971 | \$ 3,801,355 | \$ 1,464,523 | 33% |
| 2014 | \$ 4,597,456 | \$ 163,510 | \$ 4,871,257 | \$ 1,900,752 | 41% |
| 2015 | \$ 4,887,240 | \$ 165,373 | \$ 3,161,690 | \$ 1,677,466 | 34% |

ICRC - REVENUE BREAKDOWN



IONIA COUNTY ROAD COMMISSION
2015 FINANCIAL SUMMARY
WITH COMPARISON DATA

| | 2012 | 2013 | 2014 | 2015 | PRELIMINARY 2016 |
|-------------------------------------|---------------------|---------------------|---------------------|---------------------|---------------------|
| REVENUES | ACTUAL | ACTUAL | ACTUAL | ACTUAL | BUDGET |
| Beginning Fund Balance | \$1,644,654 | \$1,850,587 | \$1,679,103 | \$1,967,089 | \$1,892,224 |
| Permit Revenues | \$52,715 | \$55,080 | \$67,691 | \$81,046 | \$65,037 |
| Federal Funds | \$1,628,786 | \$1,090,447 | \$3,261,834 | \$1,752,455 | \$2,052,200 |
| Michigan Transportation Funds | \$4,511,114 | \$4,622,249 | \$4,760,966 | \$5,052,613 | \$5,011,436 |
| State Critical Bridge Funds | \$0 | \$2,368,827 | \$515,411 | \$617,871 | \$594,000 |
| State Economic Development Funds | \$27,297 | \$342,081 | \$1,094,012 | \$791,364 | \$177,450 |
| County Board Appropriation | \$275,172 | \$35,000 | \$0 | \$0 | \$0 |
| City, Private, Other Contributions | \$268,159 | \$168,672 | \$188,632 | \$99,636 | \$220,000 |
| Township Contributions | \$1,475,562 | \$1,464,523 | \$1,900,752 | \$1,677,466 | \$1,531,009 |
| State Trunkline Contract | \$1,305,150 | \$1,384,449 | \$1,804,067 | \$1,485,747 | \$1,167,462 |
| Interest Income | \$3,966 | \$2,866 | \$1,422 | \$870 | \$12,000 |
| Equipment Rental Credits | \$1,544,972 | \$1,866,885 | \$2,218,884 | \$2,169,385 | \$1,750,000 |
| Lease Proceeds | \$95,200 | \$135,000 | \$226,000 | \$220,000 | \$0 |
| Transfer in/Adjustments | \$0 | \$0 | \$0 | \$0 | \$0 |
| Miscellaneous Income | \$94,280 | \$7,088 | \$104,985 | \$178,986 | \$40,000 |
| TOTAL REVENUES | \$12,927,027 | \$15,393,754 | \$17,823,759 | \$16,094,528 | \$14,512,818 |
| EXPENDITURES | | | | | |
| Primary Heavy Maintenance-Road | \$2,279,424 | \$2,350,759 | \$932,818 | \$1,029,229 | \$1,296,000 |
| Primary Heavy Maintenance-Bridge | \$109,296 | \$2,702,305 | \$2,808,674 | \$966,426 | \$1,728,000 |
| Primary Routine Maintenance | \$1,262,181 | \$1,172,228 | \$961,467 | \$1,304,701 | \$1,033,621 |
| Primary Preventive Maintenance | \$339,821 | \$85,222 | \$1,795,111 | \$1,029,969 | \$896,658 |
| Primary Winter Maintenance | \$242,323 | \$451,603 | \$481,883 | \$376,830 | \$361,000 |
| Local Heavy Maintenance-Road | \$1,082,914 | \$674,772 | \$1,009,289 | \$1,185,797 | \$690,000 |
| Local Heavy Maintenance-Bridge | \$0 | \$24,444 | \$0 | \$0 | \$10,000 |
| Local Routine Maintenance | \$1,558,755 | \$1,703,713 | \$1,506,801 | \$1,829,568 | \$1,511,480 |
| Local Preventive Maintenance | \$609,601 | \$618,352 | \$906,676 | \$628,596 | \$593,998 |
| Local Winter Maintenance | \$179,112 | \$398,189 | \$804,377 | \$421,532 | \$350,000 |
| State Trunkline Maintenance | \$1,224,820 | \$1,267,387 | \$1,728,585 | \$1,485,830 | \$1,167,462 |
| Equipment Expense | \$1,340,265 | \$1,481,650 | \$2,042,878 | \$1,615,850 | \$1,589,942 |
| Equipment Depreciation | \$349,661 | \$374,026 | \$288,747 | \$404,178 | \$390,000 |
| Administrative Expense | \$327,469 | \$305,993 | \$303,982 | \$358,675 | \$504,930 |
| Engineering Expense | \$36,334 | \$64,070 | \$43,840 | \$30,923 | \$35,370 |
| Maintenance-Other Units | \$21,040 | \$40,416 | \$86,816 | \$125,058 | \$30,000 |
| Capital Outlay | \$337,181 | \$324,589 | \$396,730 | \$825,958 | \$820,700 |
| Debt Service | \$125,902 | \$48,958 | \$142,672 | \$117,939 | \$126,988 |
| Ending Fund Balance | \$1,850,589 | \$1,679,104 | \$1,967,061 | \$2,761,647 | \$1,766,669 |
| EXPENDITURES | \$13,276,688 | \$15,767,780 | \$18,208,407 | \$16,498,706 | \$14,902,818 |
| LESS: EQUIPMENT DEPRECIATION | (\$349,661) | (\$374,026) | (\$384,648) | (\$404,178) | (\$390,000) |
| TOTAL EXPENDITURES | \$12,927,027 | \$15,393,754 | \$17,823,759 | \$16,094,528 | \$14,512,818 |

IONIA COUNTY ROAD COMMISSION
2015 PRIMARY ROAD AND BRIDGE ROUTINE/WINTER MAINTENANCE
Summary by Township

| TOWNSHIP | COST | MILES | PER MILE |
|--------------|-----------|-------|------------|
| BERLIN | \$130,212 | 29.39 | \$4,430.49 |
| BOSTON | \$135,881 | 30.33 | \$4,480.09 |
| CAMPBELL | \$80,984 | 19.08 | \$4,244.44 |
| DANBY | \$137,866 | 23.46 | \$5,876.64 |
| EASTON | \$147,473 | 26.43 | \$5,579.76 |
| IONIA | \$116,777 | 23.33 | \$5,005.44 |
| KEENE | \$125,819 | 28.39 | \$4,431.81 |
| LYONS | \$71,421 | 18.70 | \$3,819.30 |
| NORTH PLAINS | \$91,933 | 26.49 | \$3,470.48 |
| ODESSA | \$54,801 | 19.82 | \$2,764.93 |
| ORANGE | \$136,906 | 31.33 | \$4,369.81 |
| ORLEANS | \$102,629 | 20.19 | \$5,083.16 |
| OTISCO | \$91,232 | 20.76 | \$4,394.61 |
| PORTLAND | \$80,551 | 19.51 | \$4,128.70 |
| RONALD | \$114,522 | 31.36 | \$3,651.85 |
| SEBEWA | \$62,524 | 21.13 | \$2,959.02 |

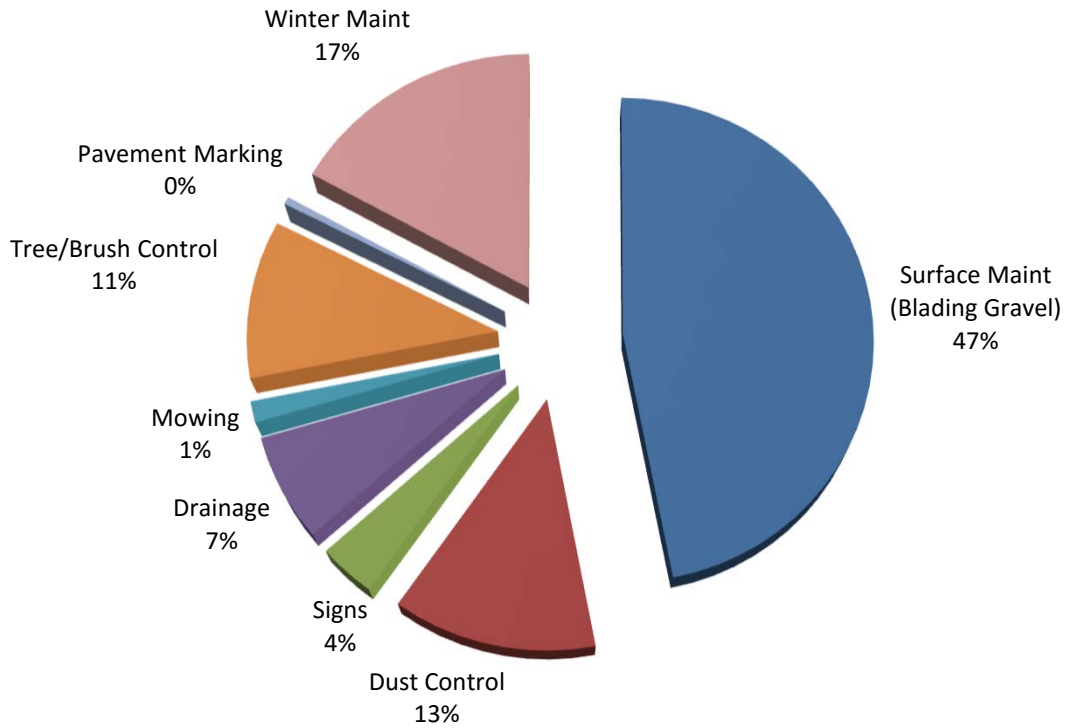
TOTAL 2015
 PRIMARY ROUTINE/WINTER
 MAINTENANCE \$1,681,531 389.70 \$4,314.94

IONIA COUNTY ROAD COMMISSION
2015 LOCAL ROAD AND BRIDGE ROUTINE/WINTER MAINTENANCE
Summary by Township

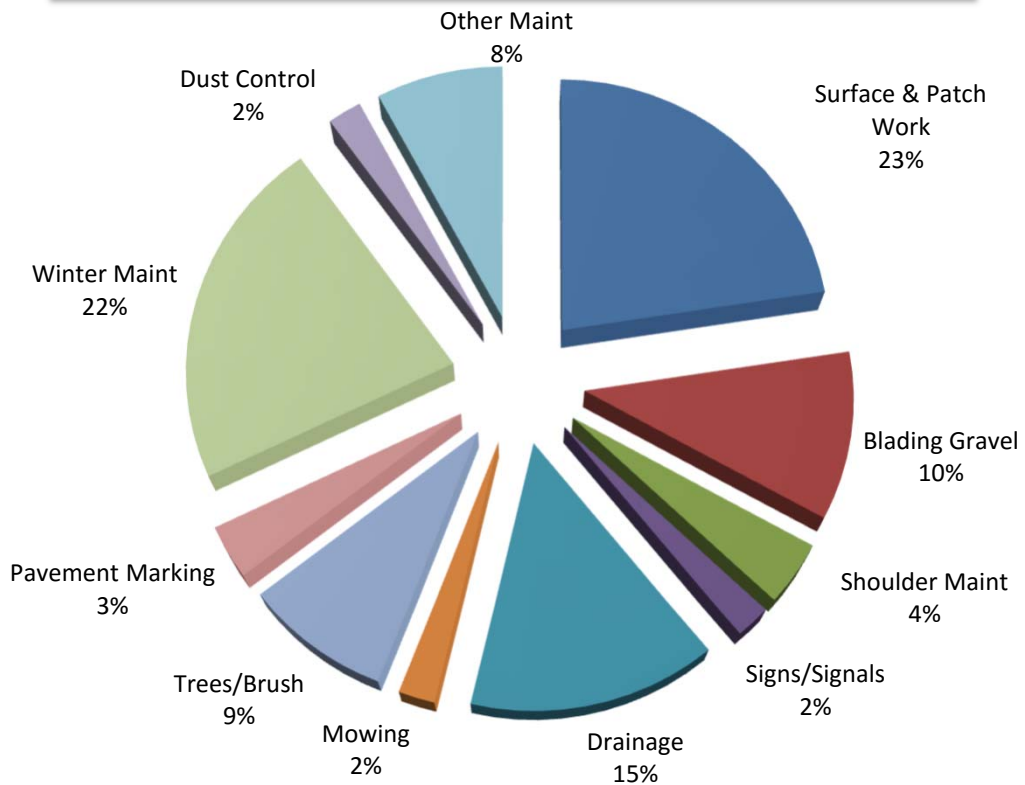
| TOWNSHIP | ICRC COST | MILES | AVERAGE PER MILE |
|--------------|-----------|-------|------------------|
| BERLIN | \$119,622 | 42.96 | \$2,784.50 |
| BOSTON | \$168,107 | 36.42 | \$4,615.79 |
| CAMPBELL | \$128,251 | 43.56 | \$2,944.24 |
| DANBY | \$179,044 | 46.19 | \$3,876.25 |
| EASTON | \$109,472 | 35.79 | \$3,058.73 |
| IONIA | \$141,319 | 42.30 | \$3,340.87 |
| KEENE | \$165,958 | 40.28 | \$4,120.11 |
| LYONS | \$151,172 | 45.19 | \$3,345.25 |
| NORTH PLAINS | \$126,385 | 42.47 | \$2,975.87 |
| ODESSA | \$201,300 | 55.52 | \$3,625.72 |
| ORANGE | \$63,623 | 25.95 | \$2,451.75 |
| ORLEANS | \$166,015 | 47.47 | \$3,497.26 |
| OTISCO | \$162,897 | 46.81 | \$3,479.96 |
| PORTLAND | \$140,645 | 42.94 | \$3,275.38 |
| RONALD | \$107,504 | 36.24 | \$2,966.45 |
| SEBEWA | \$119,785 | 51.41 | \$2,329.99 |

TOTAL 2015
 LOCAL ROUTINE/WINTER
 MAINTENANCE \$2,251,099 681.50 \$3,303.15

2015 LOCAL ROAD MAINTENANCE BY TYPE



2015 PRIMARY ROAD MAINTENANCE BY TYPE



IONIA COUNTY ROAD COMMISSION
2015 Primary Road and Bridge Projects
Listed by Township

| TOWNSHIP | DESCRIPTION | 2015 TOTAL COST | FEDERAL/ STATE FUNDS | TOWNSHIP FUNDS |
|----------|---|--------------------|-------------------------|-------------------|
| DANBY | Bridge Replacement-Keefer | \$ 37,130 | \$ 35,273 | \$ 1,514 |
| | Grand River Safety | \$ 473,168 | \$ 300,000 | \$ 17,506 |
| | Gravel resurface Tupper Lake Road | \$ 46,293 | | |
| EASTON | Crack/Chip/Fog Seal | \$ 210,997 | | \$ 210,997 |
| IONIA | Bridge Replacement-Riverside | \$ 162,034 | \$ 149,754 | \$ 30,500 |
| | Keefer Safety | \$ 191,707 | \$ 159,610 | |
| LYONS | Keefer Safety | \$ 191,707 | \$ 159,610 | |
| ORANGE | PE/Design-David Bridge | \$ 11,730 | | |
| | Gravel resurface Portland Road | \$ 46,293 | | |
| OTISCO | Bridge Replacement-Long Lake | \$ 5,313 | \$ 24 | |
| PORTLAND | Bridge Prev. Maint.-David Hwy | \$ 712,420 | \$ 639,081 | |
| | Crack/Chip/Fog Seal | \$ 40,375 | | \$ 40,375 |
| SEBEWA | Bridge Replacement-Keefer | \$ 37,130 | \$ 35,273 | |
| MISC | Engineering-future projects | \$ 80,729 | | |
| | Countywide Chip & Fog Seal Prev Maint Potters, Jefferson, Riverside, David, Kelsey, Button, Stage | \$ 742,294 | \$ 483,215 | |
| | Total | \$ 2,989,320 | \$ 1,961,840 | \$ 300,892 |

IONIA COUNTY ROAD COMMISSION
2015 Local Road and Bridge Projects
Listed by Township

| TOWNSHIP | DESCRIPTION | PROJECT COST | TOWNSHIP CONTRIBUTION |
|----------|-----------------------------------|--------------|-----------------------|
| BERLIN | Drainage and Culvert Replacements | \$ 3,054 | \$ 428 |
| | Dust Control Applications | \$ 21,094 | \$ 21,094 |
| | 6250 cyds Gravel Resurfacing | \$ 59,776 | \$ 49,597 |
| | Crack/Chip/Fog Seal | \$ 27,694 | \$ 27,694 |
| | Total | \$ 111,618 | \$ 98,813 |
| BOSTON | Drainage and Culvert Replacements | \$ 7,071 | \$ 97 |
| | Dust Control Applications | \$ 16,483 | \$ 16,483 |
| | Total | \$ 23,554 | \$ 16,580 |
| CAMPBELL | Drainage and Culvert Replacements | \$ 3,265 | \$ 227 |
| | Dust Control Applications | \$ 23,821 | \$ 23,821 |
| | Total | \$ 27,086 | \$ 24,048 |
| DANBY | Drainage and Culvert Replacements | \$ 13,642 | \$ 1,882 |
| | Dust Control Applications | \$ 22,740 | \$ 22,740 |
| | 8000 cyds Gravel Resurfacing | \$ 70,427 | \$ 60,796 |
| | Brush cut - Grand River Trail | \$ 613 | \$ 306 |
| | Total | \$ 107,422 | \$ 85,724 |
| EASTON | Drainage and Culvert Replacements | \$ 13,013 | \$ 632 |
| | Dust Control Applications | \$ 15,264 | \$ 15,264 |
| | 5000 cyds Gravel Resurfacing | \$ 44,619 | \$ 39,916 |
| | Culvert replacement-Marquette | \$ 1,066 | \$ 1,017 |
| | Chip/Fog Seal | \$ 35,241 | \$ 35,241 |
| | Total | \$ 109,203 | \$ 92,070 |

IONIA COUNTY ROAD COMMISSION
2015 Local Road and Bridge Projects
Listed by Township

| TOWNSHIP | DESCRIPTION | PROJECT COST | TOWNSHIP CONTRIBUTION |
|--------------|---------------------------------------|--------------|-----------------------|
| IONIA | Drainage and Culvert Replacements | \$ 9,047 | \$ 1,596 |
| | Dust Control Applications | \$ 19,146 | \$ 19,146 |
| | Crack/Chip/Fog Seal | \$ 47,141 | \$ 47,141 |
| | 2000 cyds Gravel Resurfacing | \$ 18,557 | \$ 15,945 |
| | E Main/Stage Safety | \$ 493,463 | \$ 151,191 |
| | Kellogg Rd Trees | \$ 18,864 | \$ 18,864 |
| | Frank Road Trees/widen | \$ 4,742 | \$ 3,099 |
| | Total | \$ 610,960 | \$ 256,982 |
| KEENE | Drainage and Culvert Replacements | \$ 2,343 | |
| | Dust Control Applications | \$ 23,373 | \$ 23,373 |
| | 4750 cyds Gravel Resurfacing | \$ 49,081 | \$ 44,165 |
| | Total | \$ 74,797 | \$ 67,538 |
| LYONS | Drainage and Culvert Replacements | \$ 11,057 | \$ 1,647 |
| | Dust Control Applications | \$ 19,941 | \$ 19,941 |
| | 4500 cyds Gravel Resurfacing | \$ 36,052 | \$ 31,642 |
| | Cut Brush-Ross Road | \$ 8,105 | \$ 4,052 |
| | Total | \$ 75,155 | \$ 57,282 |
| NORTH PLAINS | Drainage and Culvert Replacements | \$ 3,203 | \$ 786 |
| | Dust Control Applications | \$ 16,596 | \$ 16,596 |
| | 4000 cyds Gravel Resurfacing | \$ 21,558 | \$ 18,366 |
| | Total | \$ 41,357 | \$ 35,748 |
| ODESSA | Drainage and Culvert Replacements | \$ 9,516 | \$ 1,986 |
| | Dust Control Applications | \$ 12,535 | \$ 12,535 |
| | 4000 cyds Gravel Resurfacing | \$ 51,065 | \$ 44,891 |
| | Crack/Chip/Fog Seal | \$ 20,051 | \$ 20,051 |
| | Crack Seal Woodland Twp Lake Pt Drive | \$ 3,730 | \$ 3,730 |
| | Total | \$ 96,897 | \$ 83,193 |

IONIA COUNTY ROAD COMMISSION

2015 Local Road and Bridge Projects

Listed by Township

| TOWNSHIP | DESCRIPTION | PROJECT COST | TOWNSHIP CONTRIBUTION |
|----------|-----------------------------------|--------------|-----------------------|
| ORANGE | Drainage and Culvert Replacements | \$ 458 | |
| | Dust Control Applications | \$ 9,209 | \$ 9,209 |
| | 3000 cyds Gravel Resurfacing | \$ 23,865 | \$ 19,718 |
| | Total | \$ 33,532 | \$ 28,927 |
| ORLEANS | Drainage and Culvert Replacements | \$ 6,677 | \$ 765 |
| | Dust Control Applications | \$ 25,241 | \$ 25,241 |
| | 4600 cyds Gravel Resurfacing | \$ 41,466 | \$ 38,980 |
| | Total | \$ 73,384 | \$ 64,986 |
| OTISCO | Drainage and Culvert Replacements | \$ 9,770 | \$ 1,630 |
| | Dust Control Applications | \$ 22,737 | \$ 22,737 |
| | 5800 cyds Gravel Resurfacing | \$ 60,256 | \$ 54,410 |
| | Cut Brush - Flat River Trail | \$ 22,202 | \$ 11,101 |
| Total | \$ 114,965 | \$ 89,878 | |
| PORTLAND | Drainage and Culvert Replacements | \$ 2,478 | \$ 286 |
| | Dust Control Applications | \$ 24,619 | \$ 24,619 |
| | 9500 cyds Gravel Resurfacing | \$ 73,343 | \$ 67,764 |
| | Chip/Fog Seal | \$ 38,433 | \$ 38,433 |
| Total | \$ 138,873 | \$ 131,102 | |
| RONALD | Drainage and Culvert Replacements | \$ 6,387 | \$ 506 |
| | Dust Control Applications | \$ 19,676 | \$ 19,676 |
| | 3100 cyds Gravel Resurfacing | \$ 27,096 | \$ 23,557 |
| Total | \$ 53,159 | \$ 43,739 | |
| SEBEWA | Drainage and Culvert Replacements | \$ 7,961 | \$ 1,459 |
| | Dust Control Applications | \$ 23,969 | \$ 23,969 |
| | 10,000 cyds Gravel Resurfacing | \$ 90,501 | \$ 75,670 |
| Total | \$ 122,431 | \$ 101,098 | |

IONIA COUNTY ROAD COMMISSION
2015 CAPITAL OUTLAY
Equipment Purchases

Road Equipment:

| | |
|-------------------------------------|-----------|
| Sign post drivers | \$4,519 |
| Scarifier blades | \$2,391 |
| Grapple bucket | \$3,371 |
| Tandem Axle Dump Trucks (2) | \$381,000 |
| Radios | \$2,403 |
| Chainsaws/pole pruners | \$2,999 |
| Sanders (2) | \$9,916 |
| Motor Grader John Deere 772G | \$299,470 |
| Snow wing | \$15,000 |
| 2016 Ford F350 crew cab pickups (3) | \$82,593 |

Office Equipment:

| | |
|--------------------|----------|
| Computers | \$11,826 |
| Application Server | \$7,590 |

Engineering Equipment:

| | |
|----------|---------|
| Computer | \$2,882 |
|----------|---------|

TOTAL 2015 CAPITAL OUTLAY EXPENSE \$825,960

IONIA COUNTY ROAD COMMISSION

STATUS OF ROAD MILEAGE

July 1, 2015

| Township | Primary Roads | | Local Roads | | Hard Surface Total | Gravel Surface Total | Total Miles in Twp. | % Hard Surface to Total |
|--------------|---------------|----------------|--------------|----------------|--------------------|----------------------|---------------------|-------------------------|
| | Hard Surface | Gravel Surface | Hard Surface | Gravel Surface | | | | |
| BERLIN | 29.39 | 0.00 | 12.94 | 30.02 | 42.33 | 30.02 | 72.35 | 58.51% |
| BOSTON | 25.50 | 4.83 | 2.28 | 33.99 | 27.78 | 38.82 | 66.60 | 41.71% |
| CAMPBELL | 13.15 | 5.93 | 0.05 | 43.63 | 13.20 | 49.56 | 62.76 | 21.03% |
| DANBY | 16.52 | 6.89 | 1.25 | 45.49 | 17.77 | 52.38 | 70.15 | 25.33% |
| EASTON | 26.43 | 0.00 | 7.54 | 28.31 | 33.97 | 28.31 | 62.28 | 54.54% |
| IONIA | 20.86 | 2.47 | 13.44 | 29.38 | 34.30 | 31.85 | 66.15 | 51.85% |
| KEENE | 23.92 | 4.64 | 0.00 | 40.28 | 23.92 | 44.92 | 68.84 | 34.75% |
| LYONS | 15.70 | 3.00 | 1.10 | 44.50 | 16.80 | 47.50 | 64.30 | 26.13% |
| NORTH PLAINS | 18.69 | 7.80 | 1.97 | 40.50 | 20.66 | 48.30 | 68.96 | 29.96% |
| ODESSA | 16.82 | 3.00 | 0.84 | 54.84 | 17.66 | 57.84 | 75.50 | 23.39% |
| ORANGE | 23.26 | 8.07 | 0.33 | 25.49 | 23.59 | 33.56 | 57.15 | 41.28% |
| ORLEANS | 16.50 | 3.59 | 1.55 | 46.03 | 18.05 | 49.62 | 67.67 | 26.67% |
| OTISCO | 16.59 | 3.99 | 4.66 | 42.15 | 21.25 | 46.14 | 67.39 | 31.53% |
| PORTLAND | 17.30 | 2.21 | 5.17 | 38.52 | 22.47 | 40.73 | 63.20 | 35.55% |
| RONALD | 21.76 | 9.54 | 1.09 | 35.39 | 22.85 | 44.93 | 67.78 | 33.71% |
| SEBEWA | 21.13 | 0.00 | 0.00 | 51.41 | 21.13 | 51.41 | 72.54 | 29.13% |
| TOTAL | 323.52 | 65.96 | 54.21 | 629.93 | 377.73 | 695.89 | 1073.62 | 35.18% |

IONIA COUNTY ROAD COMMISSION

RIGHT-OF-WAY PERMITS ISSUED

January 1, 2015 through December 31, 2015

| Township | Residential / Farm Drive | Utility | Commercial Drive | Total Permits |
|----------------|--------------------------|------------|------------------|---------------|
| Berlin | 5 | 10 | 2 | 17 |
| Boston | 5 | 9 | 0 | 14 |
| Campbell | 5 | 10 | 0 | 15 |
| Danby | 2 | 6 | 1 | 9 |
| Easton | 2 | 3 | 1 | 6 |
| Ionia | 4 | 15 | 0 | 19 |
| Keene | 2 | 4 | 0 | 6 |
| Lyons | 3 | 14 | 0 | 17 |
| North Plains | 4 | 2 | 1 | 7 |
| Odessa | 4 | 14 | 0 | 18 |
| Orange | 2 | 8 | 1 | 11 |
| Orleans | 1 | 7 | 0 | 8 |
| Otisco | 1 | 4 | 0 | 5 |
| Portland | 2 | 20 | 0 | 22 |
| Ronald | 4 | 0 | 0 | 4 |
| Sebewa | 2 | 2 | 1 | 5 |
| Annual Utility | | 4 | | 4 |
| TOTALS | 48 | 132 | 7 | 187 |

Additional Countywide Permits

Oversize/Overweight Permits

Single 151
Annual 159

Mobile/Modular Home Permits

Single 14
Annual 7

Buildings and Special Loads

1

Seasonal Haul Route Permits

194

MDOT State Trunkline Permits:

0

TOTAL: 526

ROAD COMMISSION FOR IONIA COUNTY
ORGANIZATIONAL CHART

